

FIFTH WHEELS AND TRAVEL TRAILERS



by Keystone  
**COUGAR**  
WESTERN EDITION

**COUGAR STANDARDS - MORE THAN ANYONE ELSE!**

- Executive Chef Kitchen, most models feature:
  - Real wood cabinet doors – not composite doors
  - Dedicated trash can storage (holds 20-25 gal. container)
  - Oversized double pots and pans drawer
  - Lazy susan in overhead cabinet (most models)
  - Large 2-drawer pull out pantry drawers
  - 100% larger pantry than competitors
  - 22” baker oven with metal baking rack
  - Deep 2-bowl sink with sink cover cutting boards
  - Residential metal kitchen drawer glides with steel ball bearings throughout
- 5-sided aluminum construction
- Residential porcelain toilet with foot pedal
- Ultra lube hubs on axles (all models)
- Snap jack pins (all Fifth Wheels)
- All Fifth Wheel models under 12’ exterior height (fit under your 12’ door)
- Gel coated filon fiberglass
- 30,000 BTU furnace
- One-piece seamless rubber roof
- All windows in main slideout open

**“CAMPING IN STYLE” PACKAGE**

- Day and Night Shades
- Laundry chute
- Black trim safety glass windows (tinted to keep the sun out)
- Microwave oven with turn style
- A & E awning
- Aluminum framed sidewalls, floors, front and rear
- 13,500 BTU air conditioner
- Raised-panel upper cabinet doors

**VALUE PACKAGE**

- True home DVD system with speakers and separate zones (12 Volt compatible)
- Gas/electric water heater with fast recovery
- Residential tiled shower/tub surround
- TV antenna
- Cable hook-up
- Gel coated filon fiberglass

**SAFETY MUST-HAVES**

- Flashlight “on-demand” (12 Volt) in FWs only
- Manual backup on all main slideouts
- T-mold strip on all slideouts to keep slider sweeps on your slideout (stays on in hot weather)

- Back up scare light and doorside light (great for night arrivals at campground)
- LP sensor
- Smoke detector
- Fire extinguisher
- Carbon monoxide detector

**DRY CAMPING FEATURES FOR THOSE WHO WANT TO EXPLORE**

- 12 Volt stereo
- Large fresh, grey and black tanks on all models
- All slide-out lights are 12 Volt
- Space for dual batteries
- Under 12’ exterior height to stay clear of low hanging limbs (most models)
- Entire underbelly enclosed to keep debris off tanks, water lines, etc.

**COUGAR CONVENIENCE PACKAGE TRAVEL TRAILERS**

- Front diamond plate
- Black tank flush
- Outside shower
- Residential refrigerator front
- Spare tire

**COUGAR CONVENIENCE PACKAGE FIFTH WHEELS**

- Black tank flush
- Outside shower
- Residential refrigerator front
- Spare tire
- Large refrigerator\*\*
- Shock absorbers\*\*
- 15K air conditioner\*\*
- 16” spare tire\*\*

*\*\*Mandatory Option, 291 and 292 only*

**COUGAR OPTIONS**

- Slide in/out bike/storage rack\*\*\*
- Polar package (all TT and FW models)\*\*\*
- Hitch vision\*\*\*
- Swivel rocker
- Second swivel rocker
- Free-standing dinette
- Hide-a-bed sofa
- Rear garage (301, 281, 314 – add 18”)\*\*\*

*\*\*\* Mandatory option*

**DARE TO COMPARE**

- #1 selling fifth wheel in its class (4 years in a row)
- Highest trade-in and resale value in the industry on average
- Hitch Vision (patent pending) front cap with docking lights
- Exclusive factory installed bike/storage rack on all FW's and TT's
- Fully enclosed, sectioned underbelly with heated and enclosed dump valves
- 16.2 gallons per hour – quick recovery water heater (great for bunkhouses)
- Oversized pass-thru storage doors on both sides of each coach (with divider from front battery compartment)
- Slideout seal is mounted in a “T” track (no sticky tape to hold slide seals on)
- Cougar – Executive Chef Kitchen (see Cougar Standards for details)
- Easy access laundry chute (all models)
- Porcelain - foot flush toilets
- Solid lamberquin leg window treatments with Day and Night Shades standard on all models
- Extra large picture window at all dinettes, slide-out windows open for cross ventilation
- Five side welded aluminum super structure
- R9 sidewall insulation, R14 floor and ceiling insulation and R15 astrofoil in the slideout
- Fully ducted air conditioning retaining triple insulated, foil wrapped, light weight ducts
- 12 Volt compatible for dry camping

Product information is as accurate as possible as of the date of publication of this brochure. Features, floor plans, and specifications are subject to change without notice. Please also consult Keystone's web site at [KeystoneRV.com](http://KeystoneRV.com) for more current product information and specifications. Tow Vehicle Disclaimer: CAUTION: Owners of Keystone recreational vehicles are solely responsible for the selection and proper use of tow vehicles. All customers should consult with a motor vehicle manufacturer or their dealer concerning the purchase and use of suitable tow vehicles for Keystone products. Keystone disclaims any liability or damages suffered as a result of the selection, operation, use or misuse of a tow vehicle. KEYSTONE'S LIMITED WARRANTY DOES NOT COVER DAMAGE TO THE RECREATIONAL VEHICLE OR THE TOW VEHICLE AS A RESULT OF THE SELECTION, OPERATION, USE OR MISUSE OF THE TOW VEHICLE. 5/06

Your Cougar Dealer:



**Keystone RV Company**

2642 Hackberry Dr,  
Goshen, IN 46526 • 574-535-2100  
[www.Keystone-Cougar.com](http://www.Keystone-Cougar.com)





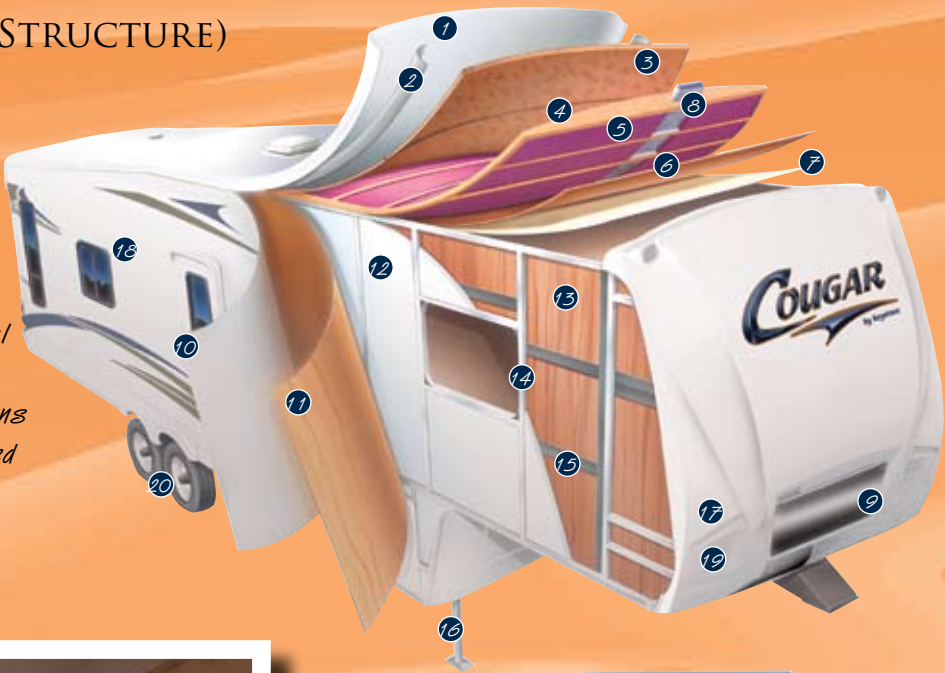
CONSTRUCTION (5-SIDED ALUMINUM SUPER STRUCTURE)

Roof (R-14)

- 1. One-piece EPDM rubber roof membrane with 12 year warranty
- 2. Aluminum radius roof transition molding
- 3. 3/8" roof decking
- 4. 5" fabricated rafters on 16" centers
- 5. Fiberglass insulation
- 6. Ceiling decking luan backer
- 7. Vinyl ceiling panel
- 8. Insulated, foam-core air conditioning duct
- 9. Hitch Vision (Patent Pending)

Sidewalls (R-9)

- 10. Gel-coated filon fiberglass
- 11. 1/8" luan board
- 12. Solid block insulating foam
- 13. Interior decorator board
- 14. 2" welded aluminum wall studs
- 15. Electro-galvanized sheet (EGS) metal backing strips
- 16. Easy access adjustable snap jack pins
- 17. Maximum turning radius for short bed trucks
- 18. Tinted safety glass windows
- 19. Docking lights
- 20. Ultra-lube axles



Floor (R-14)

- 1. 8" and 10" steel "rolled" I-beam
- 2. 3" welded aluminum floor
- 3. 3" large-capacity heat duct
- 4. 1/4" ABS sectioned underbelly
- 5. Welded cross members
- 6. Full radius wrap aluminum enclosure
- 7. Moisture barrier
- 8. Fiberglass insulation
- 9. 5/8" seamless, floor decking
- 10. Residential-grade carpeting with stain protectant
- 11. 2" heat duct from furnace into underbelly
- 12. Enclosed water lines
- 13. Ultra-lube axles



The dual wardrobe with large drawers and incredible TV / bedroom counter space is a perfect couple's retreat.



Desert Sunset



Summer Sage



Ocean Breeze



Pictured above, the 311 RLS in Summer Sage decor. With Cougar you will receive residential counter tops, angled cabinets, large windows with day and night shades residential style furniture, and hardwood cabinet doors. Cougar functionality and elegance is part of every feature.



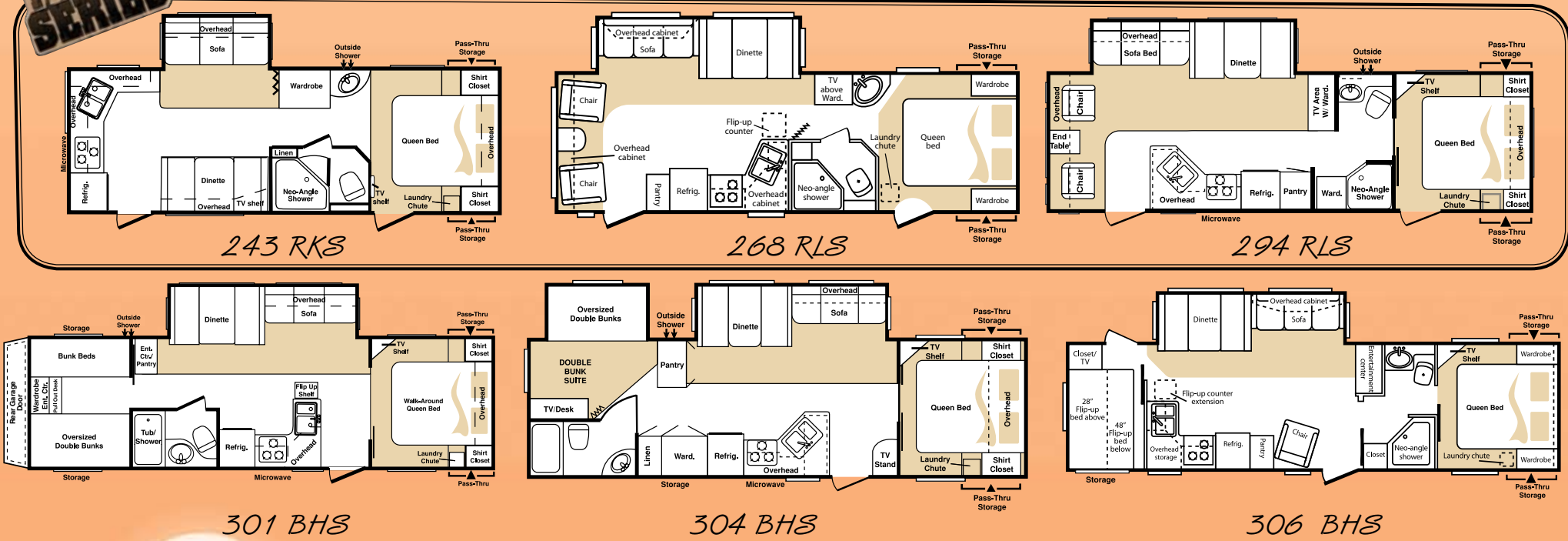
WESTERN EDITION

COUGAR

2007

by Keystone

1/2 TON SERIES



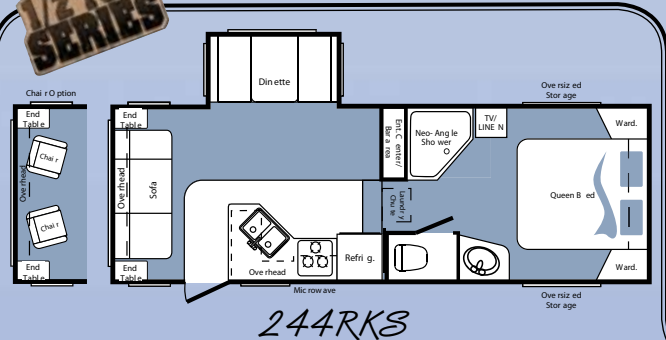
TRAVEL TRAILERS

	243 RKS	268 RLS	294 RLS	301 BHS	304 BHS	306 BHS
Shipping Weight	6030	6700	6755	7125	7495	7410
Carrying Capacity	3340	2620	2700	2540	2085	2145
Hitch	570	520	655	865	780	755
Exterior Length	27'3"	29'10"	31'4"	34'4"	33'11"	34'8"
Exterior Width	8'	8'	8'	8'	8'	8'
Ext Height A/C Top	11'1"	11'1"	11'1"	11'1"	11'1"	11'1"
Fresh Water	45	45	45	45	45	45
Waste Water	28	28	28	28	28	28
Grey Water	56	56	28	28	28	56

FIFTH WHEELS

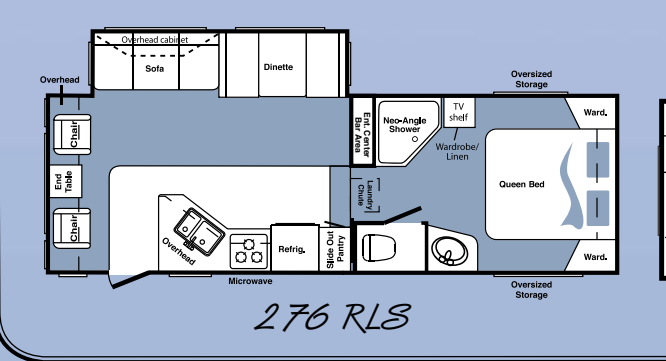
WESTERN EDITION

1/2 TON SERIES

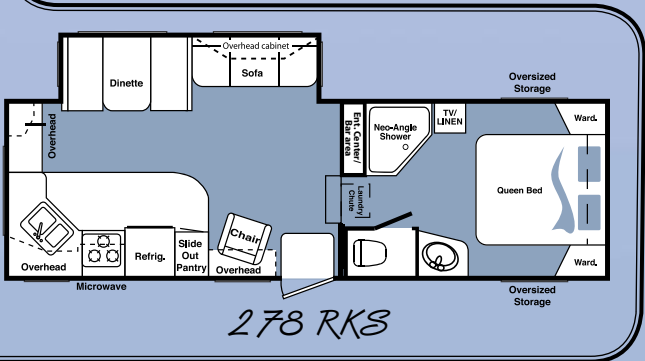


244 RKS

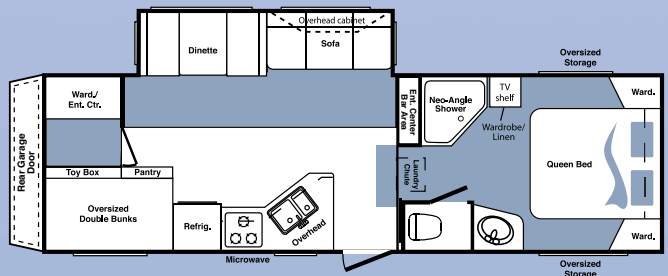
	244 RKS	276 RLS	278 RKS	281 BHS	287 IBK	289 BHS	291 RLS	292 RKS	310 SRX	314 BHS
Shipping Weight	6630	7285	7000	8020	7785	8655	8125	8780	8270	8350
Carrying Capacity	3450	3060	2940	2345	3920	1690	2875	3100	3560	3335
Hitch	1220	1545	1140	1565	1545	1545	1495	1720	1670	1525
Exterior Length	26'9"	28'9"	28'8"	32'7"	32'7"	32'7"	30'10"	33'	35'4"	35'4"
Exterior Width	8'	8'	8'	8'	8'	8'	8'	8'	8'	8'
Ext Height - A/C Top	11'8"	11'8"	11'8"	12'0"	11'10"	12'0"	11'10"	12'0"	12'0"	12'0"
Fresh Water	45	45	45	45	45	45	45	45	45	45
Waste Water	28	28	28	28	28	28	28	28	28	28
Grey Water	56	56	56	56	56	56	56	56	56	56



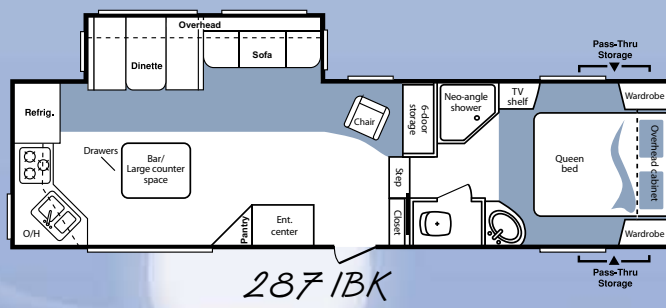
276 RLS



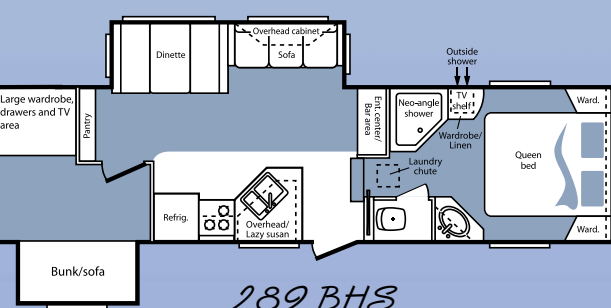
278 RKS



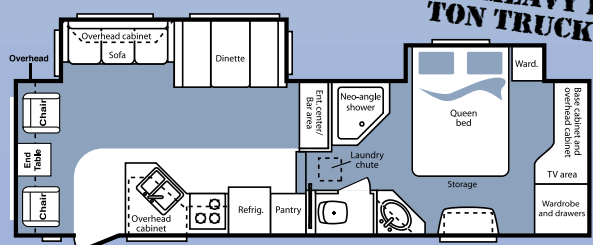
281 BHS



287 IBK

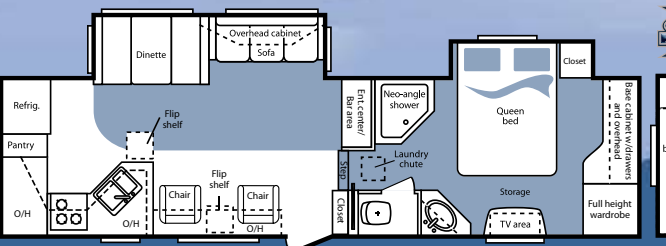


289 BHS

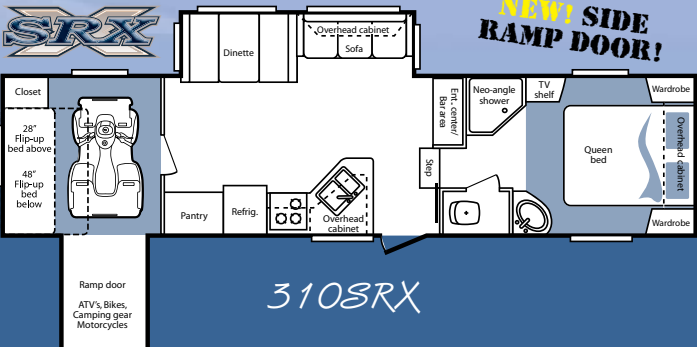


291 RLS

291 - DESIGNED FOR HEAVY 1/2 TON TRUCKS

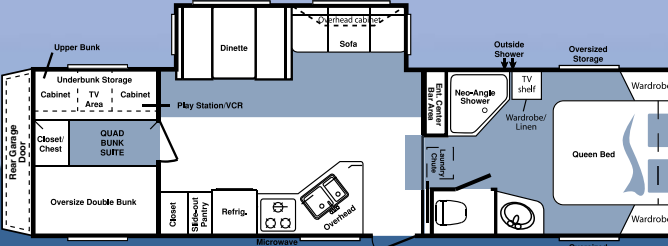


292 RKS



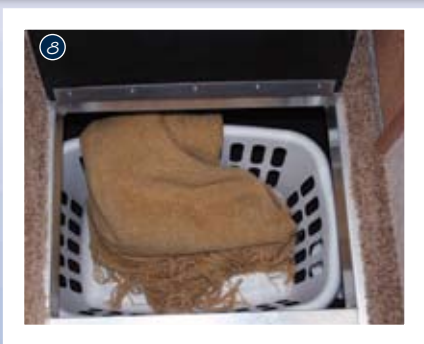
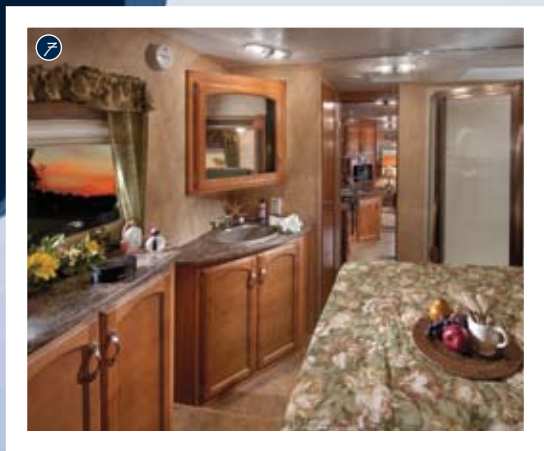
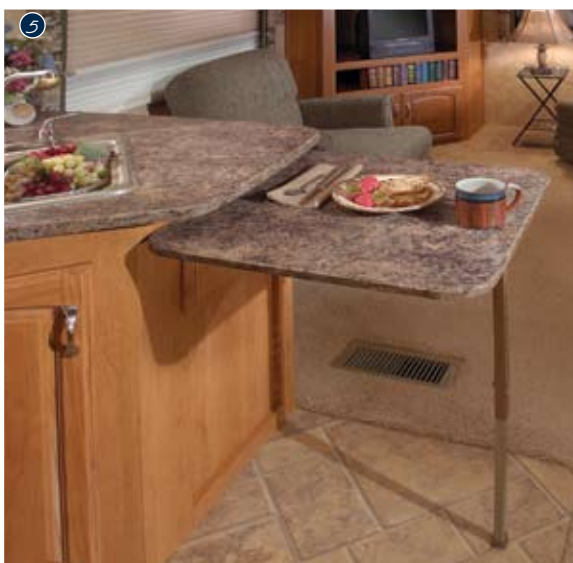
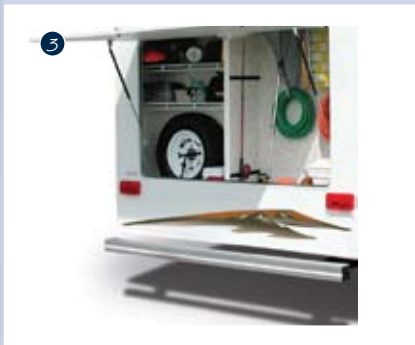
310 SRX

NEW! SIDE RAMP DOOR!



314 BHS





## DISCOVER THE DETAILS

1. 12 Volt "On-Demand" Flashlight:  
Located by entrance door
2. Exclusive Slide-out Bike Rack (except on 1/2 ton series)
3. Rear Garage: 68 cubic feet of additional storage (most bunk models)
4. Oversized Pass-thru Storage: with divider from battery compartment
5. Auxiliary Kitchen Counter Extension (most Fifth Wheel models)
6. Polar Package: fully enclosed, sectioned underbelly with heated and enclosed dump valves
7. Beautifully crafted bathroom and shower includes a porcelain flush toilet.
8. Laundry Chute: available on all models

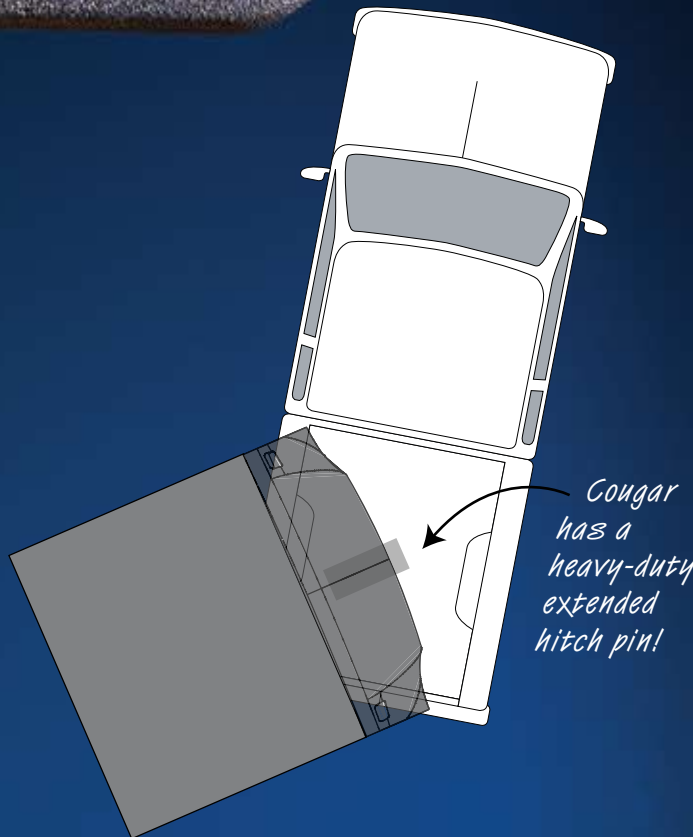


*Cougar's specially designed front cap substantially improves the turning radius of our fifth wheels. You'll be able to handle tight parking maneuvers even when attached to short bed pick-up trucks.*

## HITCH VISION

*Hitch Vision moves the dial forward in what customers expect from an RV. There's no looking back! Hitch Vision gives the Fifth Wheel user complete confidence to back up and align their truck to Cougar's extended hitch pin using only the built-in mirror for guidance. Dual automotive docking lights allow easy unloading and loading of camping gear day or night. Once you've used Hitch Vision, there's no returning to the inconvenience of turning and straining to see or getting out of your truck to dock and unload.*

**EXPERIENCE HITCH VISION  
WITH YOUR NEW COUGAR TODAY!**



*Cougar has a heavy-duty extended hitch pin!*