


Excel



The Nation's Top-Rated Fifth Wheel



2005 Catalog



The gold
standard in
fifth wheels.

*See for yourself how the RV Consumer
Group rated our fifth wheels!*

"We are very conservative in awarding 4-star ratings....
You will find very few 5-star models in this edition."

— RV Price & Ratings CD Guide

Go to rv.org for more information on the RV Consumer Group.

Number one. That's Excel!

Excel has been honored with the highest ratings for any dealer-based fifth wheel manufacturer from the RV Consumer Group, publishers of the famous "Green Book" RV rating guide. Excel models received an average four-and-a-half star rating — no other dealer-based fifth wheel even comes close to our gold medal performance!

Excel rolled past the competition in:

VALUE



How long will your fifth wheel last? How slowly will it depreciate? And how reasonable is the price to begin with? These are all factors in determining value. Excel fifth wheels average a 4-star rating of 87 out of 100 for value in The Green Book!*

RELIABILITY



Compiled from owner input and appraisal analyses, the reliability rating looks at models five to ten years old to ascertain how well your fifth wheel will hold together. And what rating did the RV Consumer Group give Excel? An impressive 88!*

Many others received ratings below 70.

HIGHWAY CONTROL



The Green Book's highway control rating takes into account load balance, payload, axle capacity and more to estimate how safely the fifth wheel can be controlled — especially under adverse road and weather conditions. Excel models 36' and under average an incredible 87.3 in this category!*

*Find your way to Excel for the gold standard
in dealer-based fifth wheels!*

*Source: RV Price & Ratings CD Guide, April-June 2004, RV Consumer Group





ExcelRT



Are you a trekker? Do you long to explore the back roads, the rough roads and the middle of nowhere? Then the Excel RT is for you! With extra-rugged external features and a well-built interior, the Excel RT is tailor-made for taking you off the beaten path. Excellent insulation keeps you warm in the mountains and cool in the desert. The optional dining booth, hide-a-bed and CD stereo make you feel at home even when you're miles away from anywhere. With a heavy-duty chassis and optional generator box, the Excel RT gives you a ticket to adventure — without sacrificing any of Excel's gold medal quality.



ExcelRT

You'll love the Excel RT! You'll go places you've never even thought of before. The extra-tough features will keep you safe and comfortable through rugged terrain and bold adventure.



Dine in cozy comfort at the optional dining booth with additional under-seat storage.





Floorplan 28TRW

Excel RT Standard Features

- Filon Fiberglass Sidewalls
- One-piece Seamless Rubber Roof
- Flush and Radius Access Doors
- Fully Enclosed and Heated Underbelly
- 16" D Rated Tires
- Molded Gel-coat Fiberglass Front & Back Caps
- Electric Front Jacks
- Tinted Windows
- Two 30# LP Bottles
- 8" Door-side Scene Light
- 45 Amp Converter
- 30 Amp Service
- Directly Heated Holding Tanks, Holding Tank Valves and Water Lines
- Flush Floor Slide Rooms with Independent 12v Motors and Manual Back-up
- Oil filled slide-out gearboxes with manual override
- Tuff-Pex Water System
- Double Bowl Kitchen Sink with High Profile Faucet
- Fire Extinguisher, Smoke Detector and LP Leak Detector
- Rocker/Glider Swivel Recliners
- Monitor Panel
- 15,000 Watt Roof Air Conditioner with Wall Mount Thermostat
- 35,000 BTU Automatic Ignition Furnace with In-floor Ducting
- Magic Store Sofa
- Computer Station (most models)
- 8 Cubic Foot Refrigerator
- Low Mount Microwave
- Large ABS Residential Size Shower
- Overhead Storage in Slide Out Rooms
- Gas/Electric 6 Gal DSI Water Heater



The 32SKW with its extra-large "jealousy" windows is one of three spacious and attractive Excel RT floorplans.



In the bedroom, you'll find comfortable features like designer bedspreads with matching curtains, abundant storage, and a custom cabinet for your 13 inch TV.



Invite family and guests to spend the night! Our standard sofas fold out for additional sleeping options.



Regardless of the floorplan you choose, kitchens are fully equipped with high-output three-burner stoves, fluorescent task lighting and oak framed doors with raised panels.



You won't feel cramped in the king size shower with overhead skylight.

Find your way to gold medal comfort!

Excel Classic



Come to Excel for the highest value rating in dealer-based fifth wheels! (four and a half stars)

A custom-built home that goes where you do — that's the Excel Classic! Standard features like glass shower doors, nightstands, dual sofa incliners and matching bed ensembles surround you in gold medal style and comfort.

Sit back and relax to your favorite music or DVD from the surround sound home theater system with satellite TV.

All Classic floorplans are packed with space-saving innovations and amazing storage capacity. No wonder Excel is the top-rated dealer-based fifth wheel you can buy!



The optional "E-Z Up" coffee table doubles as a writing desk or serves two additional place settings for dinner.



Floorplan 33RKO



Bathroom layouts include open baths with king size showers or enclosed layouts with optional tub/shower configuration. Both include ample storage and quality fixtures.



Bedroom amenities include mirrored closet doors that glide easily, built-in hampers, twin nightstands with storage underneath and room for a 13 inch TV.



Excel Classic



Plan meals and shopping lists at the handy kitchen desk. Flip-up the peninsula countertop to add workspace for more convenient preparation.



The 30SKW features both a slide-out kitchen and slide-out living room for wide open living space. Sit back in your twin recliners and enjoy!





Excel Classic Standard Features

- Flush Floor Slide Rooms with Independent 12v Motors and Manual Back-up
- Oil filled slide-out gearboxes with manual override
- Queen Innerspring Mattress with Comforter, Pillows and Shams
- Nightstand on Each Side of the Bed
- Lightblocker Vent Cover in Bedroom
- 21" 3-Burner High Output Range
- Glass Shower Door
- 39 Gal. Black Water Holding Tank
- 55 Gal. Gray Water Tank
- 64 Gallon Fresh Water System
- Tuff-Pex Water System
- Shock Absorbers
- Power Vent in Bathroom
- LP Leak Detector
- Berber Style Carpet with 8 lb. Rebond Pad
- Dual Sofa Incliners
- Awning
- Monitor Panel
- Sliding Oak Dinette Table
- Large 2-Door Refrigerator
- Electric Jacks
- Lights in Basement
- Stabilizer Jacks
- Oak Toilet Paper Holder
- Acrylic Fiberglass Sink
- Linoleum in Bathroom
- Telephone/Cable TV Prewire
- 27" TV with DVD and Digital Surround Sound
- TV Antenna with Booster
- Ceiling-installed Dual Satellite Wiring (wires only)
- Oak-framed Cabinets with Raised Panel Doors
- Lift-Up Bed for Additional Storage
- Water Heater Bypass
- "Chill Grille" Frame on Air Conditioner
- Ducted Central Air Conditioner with Adjustable Vents
- 16" Radial Tires
- Dual 30 lb. LP Bottles
- 6'4" Ceilings in the Level Bath and Bed Deck Area
- Gel-Coated Fiberglass Exterior
- 1-38" Thick Radius Gel-Coated Access Doors
- Drop "Z" Box Tube Frame Construction (not C-Channel or I-Beam)
- Large Basement Storage Area
- White Spoke Wheels
- Decked "Walk Anywhere" Rubber Roof
- Gas/Electric Water Heater with DSI



Shower Skylight



1½ tons of payload capacity



Deep, roomy drawers



Exterior lawnchair storage (most models)



Gel-coated access doors



Slide out pantry (most units)



TV/Home theatre system with DVD and surround sound

Find your way to the gold
standard in RV elegance!

Excel Limited



Go ahead. You've earned it. Travel in the luxury you've always wanted. Thick carpeting, lustrous oak cabinetry, duplex shades and a 27" TV with DVD and Digital Surround Sound are all standard features with the Excel Limited. Add great options like padded ceilings, a combo tub/shower and a king suite. Travel is truly an elegant experience!

Choose from an outstanding variety of floorplans with features like slide-out entertainment centers, open baths, island kitchens, private dens and luxury upholstery options like bomber jacket leather.

our



Floorplan 36RDO



Solid surface countertops, spacious slide-out pantries and deep drawer storage come standard in every Excel Limited kitchen.



You'll love the private den of the new 36RDO, featuring an optional 32 inch remote lift-up plasma TV, and electric fireplace.



The optional king suite, surrounded by oak cabinetry, provides plenty of room to relax after a long day of adventure.



Excel Limited

Take the kitchen of your dreams on the road! Wilsonart® Performance Flooring, solid surface countertops, spacious slide-out pantries, and deep drawer storage are all standard with the Limited. Gourmet options include an icemaker, quad door refrigerator, and whole-house water filter system. It's the gold medal quality you'd expect from Excel.



The slide-out dining area of the new 36CLO features an oak pedestal table and built-in hutch with glass doors.



Everywhere you look, you'll find exquisite details like the beautiful oak finishes, designer window treatments, digital surround sound, optional padded ceilings and more!



Spaghetti
tonight



Floorplan 36CLO w/optional flip-up counter on the island



The large oak vanity in the 36CLO and 36RDO features a solid surface countertop, built-in medicine cabinets on each side of the mirror and extra deep drawers for towels and accessories.



Handy pre-wired computer centers, complete with a filing drawer are available in several floorplans.

Limited Edition Standard Features

The Excel Limited Edition includes all the standard features of the Excel Classic listed on page 8 with the following additions:

- Wilsonart® "Performance Flooring" in Bathroom, Kitchen and Entry Area
- Window Treatment: Contour Padded Valances with Curtains/Duplex Shades
- "Walk Anywhere" Molded Gel-Coated Fiberglass Roof
- Dark Tinted Windows
- Louvered Oak Closet Doors
- Solid Surface Countertops
- 27" TV with DVD and Digital Surround Sound
- Recessed Fluorescent Lighting
- Acrylic Fiberglass Sink
- Acrylic Fiberglass Lavatory
- China Toilet with Bowl Sprayer
- Holding Tank Flush System
- Sliding Solid Oak Dinette Table with Pedestal Base or Round Table with Hidden Leaf (some models)
- Solid Oak Raised Panel Cabinet Doors
- Recessed Range Cover with Swanstone® Top
- Spare Tire and Wheel Ensemble with Crank Down Hoist
- Oak Faced Slide-Out Flange with Oak Cornice
- Aluminum Alloy Wheels



Lazy Susan (most units)



Solid surface flush mount range cover



Solid surface countertops



Wilsonart® Performance Flooring

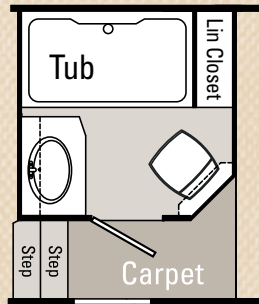
2005 Floorplans

Excel offers a variety of floorplans, with exceptional features like peninsula kitchens, king suites, creative storage and multiple slide-outs. Every one is crafted with the care and precision that make Excel the top-rated dealer-based fifth wheels in the country!

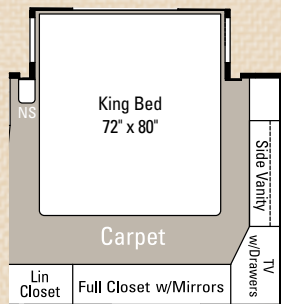
Optional Tub/Shower Configuration:

The Combo Tub/Shower option is available on the following floorplans:

33RSE, 35FLR, 35MKE, 35PKE, 35RKE, 36CLE, 36RDE.



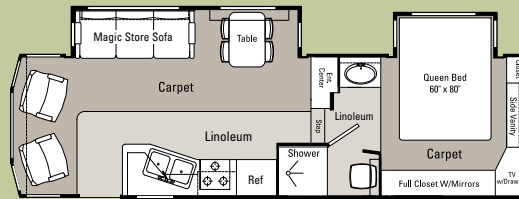
Optional King Suite: Cabinetry Varies with Floorplan



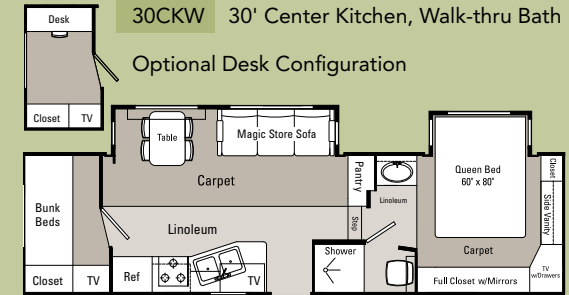
The King Suite option is available on all Classic and Limited Edition floorplans.

CLASSIC OR LIMITED

28TRW 28' Twin Recliner, Walk-thru Bath



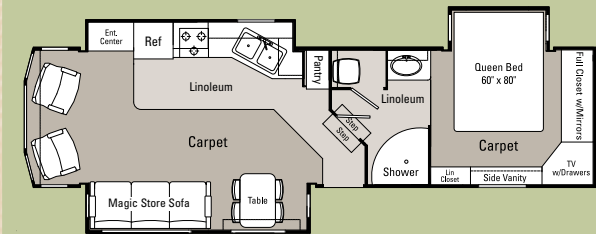
30CKW 30' Center Kitchen, Walk-thru Bath



30PKE 30' Peninsula Kitchen, Enclosed Bath



32SKW 32' Slide-out Kitchen, Walk-thru Bath



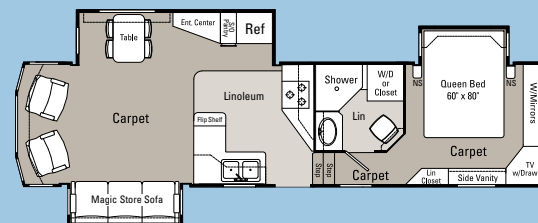
30PKW 30' Peninsula Kitchen, Walk-thru Bath



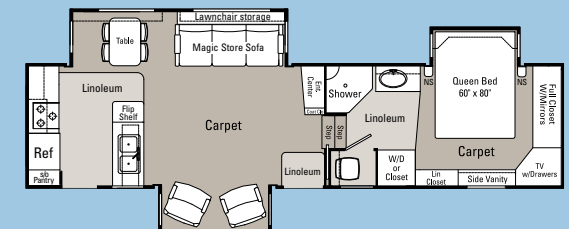
30SKW 30' Slide-Out Kitchen, Walk-thru Bath



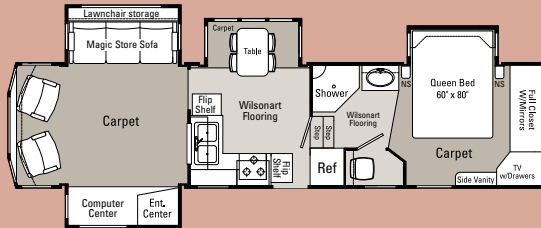
33RSE 33' Rear Right Sofa, Enclosed Bath



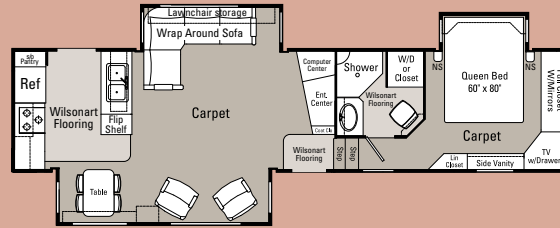
33RKO 33' Rear Kitchen, Open Bath



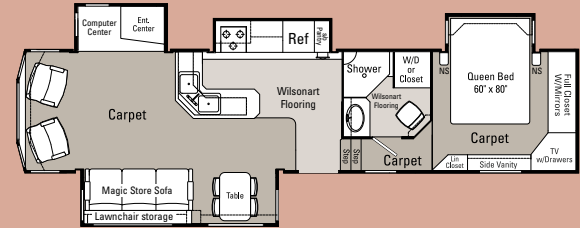
33RDO 33' Rear Den, Open Bath



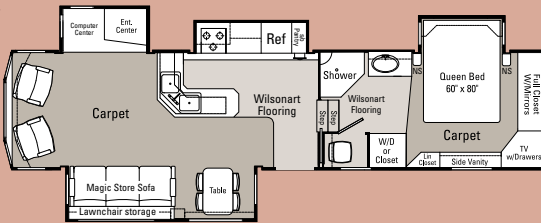
35FLR 35' Front Living Room, Right Side Isle



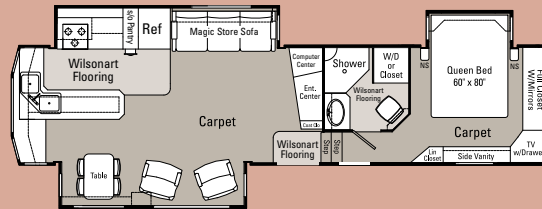
35MKE 35' Mid Kitchen, Enclosed Bath



35MKO 35' Mid Kitchen, Open Bath



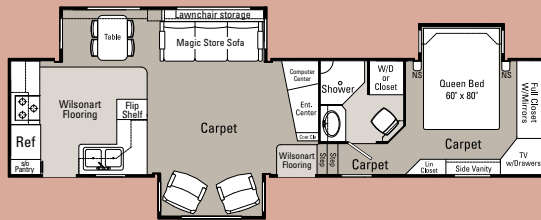
35PKE 35' Peninsula Kitchen, Enclosed Bath



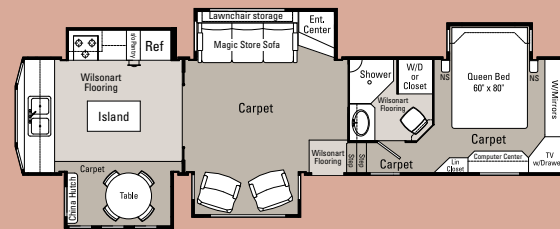
35PKO 35' Peninsula Kitchen, Open Bath



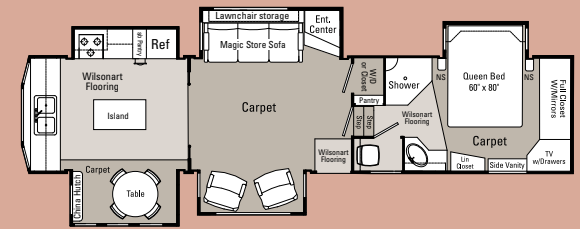
35RKE 35' Rear Kitchen, Enclosed Bath



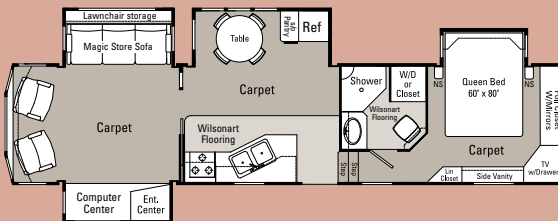
36CLE 36' Center Living Room, Enclosed Bath



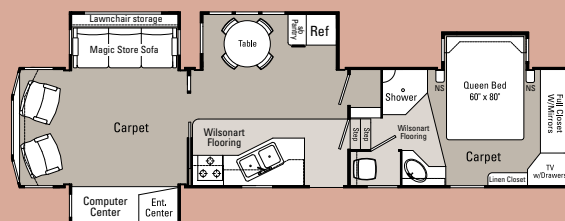
36CLO 36' Center Living Room, Open Bath



36RDE 36' Rear Den, Enclosed Bath



36RDO 36' Rear Den, Open Bath



You'll find a gold medal selection of models, options and configurations for a top-rated RV experience!



2005 Specifications

Peterson Industries is proud to use these suppliers because they share the same commitment as we do:



Gordmans generously provided many of the decorator items featured in the photos of this brochure.

	Excel RT			Excel Classic				
	28TRW	30CKW	32SKW	30PKE	30PKW	30SKW	33RKO	33RSE
Base Unit Wt. (W/O Opt.)	9,540	9,900	10,690	11,240	11,240	11,200	11,600	12,080
Unloaded Vehicle Wt. (W/O Water)	9,840	10,200	10,990	11,540	11,540	11,500	11,900	12,380
Hitch Weight (W/O Water)	2,050	2,050	2,090	2,400	2,400	2,300	2,420	2,500
Weight on Axles	7,790	8,150	8,900	9,140	9,140	9,200	9,480	9,880
Combined Axle Weight Rating	10,400	10,400	12,000	12,000	12,000	12,000	14,000	14,000
Payload Capacity	2,760	2,400	3,610	3,060	3,060	3,100	5,200	4,720
Maximum GVWR	13,000	13,000	15,000	15,000	15,000	15,000	17,500	17,500
Height (Incl Vents & A/C)	142"	142"	142"	*143½"	*143½"	*143½"	*143½"	*143½"
Overall Length	29' 8"	31' 1"	33' 1"	31' 11"	31' 11"	31' 11"	34' 11"	34' 11"
Fresh Water Capacity	71	71	71	64	64	64	64	64
Gray Water Capacity	55	55	55	55	55	55	55	55
Black Water Capacity	39	39	39	39	39	39	39	39
In-Line Central Air	15M	15M	15M	15M	15M	15M	15M	15M
Furnace BTU	35M	35M	35M	35M	35M	35M	35M	35M
Living Area Interior Height	7' 6"	7' 6"	7' 6"	7' 6"	7' 6"	7' 6"	7' 6"	7' 6"
Bedroom Interior Height	6' 0"	6' 0"	6' 0"	6' 4"	6' 4"	6' 4"	6' 4"	6' 4"
2 Pc. Stacking Washer/Dryer	N/A	N/A	N/A	N/A	N/A	N/A	OPT	OPT
Electric Fireplace	N/A	N/A	N/A	N/A	N/A	N/A	OPT	OPT
Awning Size	17'	17'	14'	17'	17'	16'	16'	19'

*When equipped with optional adjustable suspension kit

Excel Limited															
30PKE	30PKW	30SKW	33RKO	33RDO	33RSE	35FLR	35MKE	35MKO	35PKE	35PKO	35RKE	36CLE	36CLO	36RDE	36RDO
11,820	11,820	11,640	12,220	12,850	12,220	13,150	13,540	13,540	13,490	13,490	13,150	15,065	15,065	14,390	14,390
12,120	12,120	11,940	12,520	13,150	12,520	13,450	13,840	13,840	13,790	13,790	13,450	15,365	15,365	14,690	14,690
2,500	2,500	2,500	2,570	2,510	2,570	2,560	2,760	2,760	2,520	2,520	2,560	2,890	2,890	2,800	2,800
9,620	9,620	9,440	9,950	10,640	9,950	10,890	11,080	11,080	11,270	11,270	10,890	12,475	12,475	11,890	11,890
12,000	12,000	12,000	14,000	14,000	14,000	14,000	14,000	14,000	14,000	14,000	14,000	15,000	15,000	15000	15000
2,480	2,480	2,660	4,580	3,950	4,580	3,650	3,260	3,260	3,310	3,310	3,650	2,985	2,985	3,660	3,660
15,000	15,000	15,000	17,500	17,500	17,500	17,500	17,500	17,500	17,500	17,500	17,500	18,750	18,750	18,750	18,750
143½"	143½"	143½"	143½"	143½"	143½"	143½"	143½"	143½"	143½"	143½"	143½"	146"	146"	146"	146"
31' 11"	31' 11"	31' 11"	34' 11"	34' 11"	34' 11"	36' 8"	36' 8"	36' 8"	36' 8"	36' 8"	36' 8"	37' 11"	37' 11"	37' 11"	37' 11"
64	64	64	64	64	64	64	64	64	64	64	64	64	64	64	64
55	55	55	55	55	55	55	55	55	55	55	55	55	55	55	55
39	39	39	39	39	39	39	39	39	39	39	39	39	39	39	39
15M	15M	15M	15M	15M	15M	15M	15M	15M	15M	15M	15M	15M	15M	15M	15M
35M	35M	35M	35M	35M	35M	35M	35M	35M	35M	35M	35M	40M	40M	40M	40M
7' 6"	7' 6"	7' 6"	7' 6"	7' 6"	7' 6"	7' 6"	7' 6"	7' 6"	7' 6"	7' 6"	7' 6"	7' 6"	7' 6"	7' 6"	7' 6"
6' 4"	6' 4"	6' 4"	6' 4"	6' 4"	6' 4"	6' 4"	6' 4"	6' 4"	6' 4"	6' 4"	6' 4"	6' 4"	6' 4"	6' 4"	6' 4"
N/A	N/A	N/A	OPT	N/A	OPT	OPT	OPT	OPT	OPT	OPT	OPT	OPT	OPT	OPT	OPT
N/A	N/A	N/A	OPT	OPT	OPT	OPT	OPT	OPT	OPT	OPT	OPT	OPT	OPT	OPT	OPT
17'	17'	16'	16'	18'	19'	17'	17'	17'	17'	17'	16'	17'	16'	17'	20'

2005 Options

Appliances & Accessories	RT	Classic	Limited
<input type="checkbox"/> Ice Maker in Ref. (N/A if Ref. is in slide-out)	NA	Opt.	Opt.
<input type="checkbox"/> Satellite Ready (for Dual Horn System)	Opt.	Opt.	Opt.
<input type="checkbox"/> Dual Horn Satellite System with Receiver – 4-month Program	NA	Opt.	Opt.
<input type="checkbox"/> Telephone Jack in Bedroom (second jack)	NA	Opt.	Opt.
<input type="checkbox"/> Utility Center with Scene Light	Opt.	Opt.	Opt.
<input type="checkbox"/> Central Vacuum System with Powerhead	NA	Opt.	Opt.
<input type="checkbox"/> Hydroflame 2-Stage Furnace	NA	Opt.	Opt.
<input type="checkbox"/> Washer/Dryer Ready	NA	Opt.	Opt.
<input type="checkbox"/> Two-Piece Stack Washer/Dryer Installed	NA	Opt.	Opt.
<input type="checkbox"/> Quad Door Refrigerator	NA	NA	Opt.
<input type="checkbox"/> 1/2 Time Convection Microwave	NA	NA	Opt.

Furniture & Accessories	RT	Classic	Limited
<input type="checkbox"/> Mainstreet Sofa w/hide-a-bed	NA	Opt.	Opt.
<input type="checkbox"/> Pillow Top Mattress	NA	Opt.	Opt.
<input type="checkbox"/> Ultra-Leather Recliners	NA	Opt.	Opt.
<input type="checkbox"/> Ultra-Leather Sofa	NA	Opt.	Opt.
<input type="checkbox"/> "E-Z Up" Oak Coffee Table	NA	Opt.	Opt.
<input type="checkbox"/> Oak End Table (between recliners)	NA	Opt.	Opt.
<input type="checkbox"/> Sofa Caddie (N/A in Mainstreet Sofa)	NA	Opt.	Opt.
<input type="checkbox"/> Duplex Shades (instead of standard mini-blinds)	Opt.	Opt.	Std.
<input type="checkbox"/> Oak Slide-Out Flanges	NA	Opt.	Std.
<input type="checkbox"/> Fabric Slide-Out Flanges	NA	Opt.	Opt.
<input type="checkbox"/> Hide-A-Bed in "Magic Store" Sofa	Opt.	Opt.	Opt.
<input type="checkbox"/> Built-In Under-Sink Wastebasket	NA	Opt.	Opt.
<input type="checkbox"/> Padded Ceiling	NA	NA	Opt.
<input type="checkbox"/> Oak Valances	NA	NA	Opt.
<input type="checkbox"/> King Suite	NA	Opt.	• P

Opt.=Optional Std.=Standard

The information printed in this brochure reflects product design at the date of printing. Peterson Industries reserves the right to make changes in the design and material specifications without notice. Some features shown in this brochure are optional and may only be available in selected floorplans. Photographs use props and decorations that are not standard equipment.

Construction and Body Features	RT	Classic	Limited
<input type="checkbox"/> Camper Jacket	NA	Opt.	Opt.
<input type="checkbox"/> Storm Windows	NA	Opt.	Opt.
<input type="checkbox"/> Tinted Windows	Std.	Opt.	Std.
<input type="checkbox"/> Tinted Thermo-Pane Windows	NA	Opt.	Opt.
<input type="checkbox"/> 16" Spare Tire Ensemble	Opt.	Opt.	Std.
<input type="checkbox"/> Roof Rack & Ladder (w/ Portable Extension on Classic & Limited)	Opt.	Opt.	Opt.
<input type="checkbox"/> Fifth Wheel Jack Snaps	Opt.	Opt.	Std.
<input type="checkbox"/> Folding Outside Handrail	Opt.	Opt.	Std.
<input type="checkbox"/> Adjustable Suspension Kit (N/A on 36')	NA	Opt.	Opt.
<input type="checkbox"/> Nev-R-Lube Axles w/Greasable Suspension	NA	Opt.	Opt.*
<input type="checkbox"/> Boat Hitch	Opt.	Opt.	Opt.
<input type="checkbox"/> Dual Sliding LP Trays	NA	Opt.	Opt.
<input type="checkbox"/> Sliding Storage Tray	NA	Opt.	Opt.
<input type="checkbox"/> Mor-Ryde Suspension w/Disc Brakes	NA	Opt.	Opt.
<input type="checkbox"/> Coordinating Pickup Graphics	NA	NA	Opt.

Plumbing	RT	Classic	Limited
<input type="checkbox"/> Tub (instead of shower in enclosed bath)	NA	Opt.	Opt.
<input type="checkbox"/> Whole House Water Filter	NA	Opt.	Opt.
<input type="checkbox"/> AquaTec Variable Speed Water Pump	NA	Opt.	Opt.
<input type="checkbox"/> Holding Tank Flushing System	Opt.	Opt.	Std.
<input type="checkbox"/> 10 gal. GE Water Heater	Opt.	Opt.	Opt.

Electrical	RT	Classic	Limited
<input type="checkbox"/> Ceiling Fan (N/A in R28TRW)	Opt.	Opt.	Opt.
<input type="checkbox"/> "High Volume" Fan with Rain Sensor	Opt.	Opt.	Opt.
<input type="checkbox"/> Electric Fireplace (N/A in all models)	NA	Opt.	Opt.
<input type="checkbox"/> Steel Generator Box (box only, not available on R28TRW)	Opt.	Opt.	Opt.*
<input type="checkbox"/> 5500W Generator (including Gen Ready)	NA	Opt.	Opt.
<input type="checkbox"/> Generator Ready (includes box)	NA	Opt.	Opt.
<input type="checkbox"/> H&H Electric Rear Stabilizer Jacks	NA	Opt.	Opt.
<input type="checkbox"/> Battery Disconnect	NA	Opt.	Opt.
<input type="checkbox"/> Heat Pump instead of Air Conditioner	NA	NA	Opt.
<input type="checkbox"/> Atwood Electric Leveling System	NA	NA	Opt.

*Standard on 36' units

Whether you're looking for the ultimate in efficiency or the lap of luxury, we have the space-saving innovations and designer details that really make you feel at home on the road.

Excel offers dozens of gold medal options to fully customize your fifth wheel!



Pull your Excel Limited in style with coordinating pickup graphics.



The central vac with powerhead makes cleaning a breeze!



Slide-out storage tray keeps your belongings within reach.



Camper jacket adds style and protection, and yet still allows you to access the basement door.



The boat hitch doubles as a receiver hitch for a bicycle rack.



You won't lose sleep on the comfort of this pillowtop mattress.



Exterior utility center offers convenient access to water and electricity.



Pivot-EZ sewer hose compartment ensures you'll never have to disconnect your hose from the RV.



The satellite dish with GPS means you'll never be at a loss for television programming.



Electric stabilizer jacks make set-up a breeze and saves your back and shoulders.



The quad door refrigerator features 13 cubic feet of space.



Slideout propane compartments on each side of coach keep tanks secure, and make the controls easy to read and reach.



The Electric Awning is just as sophisticated as the rest of your RV — operate it from inside, key fob remote control, or let the wind sensor automatically retract it!



Smooth out the road with this independent **Air Ride** suspension system, acting in tandem with a torsion axle, that puts each tire on its own active cushion of air — filling and releasing as needed.



The **Mor/ryde** (rubber independent suspension) system replaces the standard leaf spring suspension to provide smooth towing and better protects your RV from road shock.

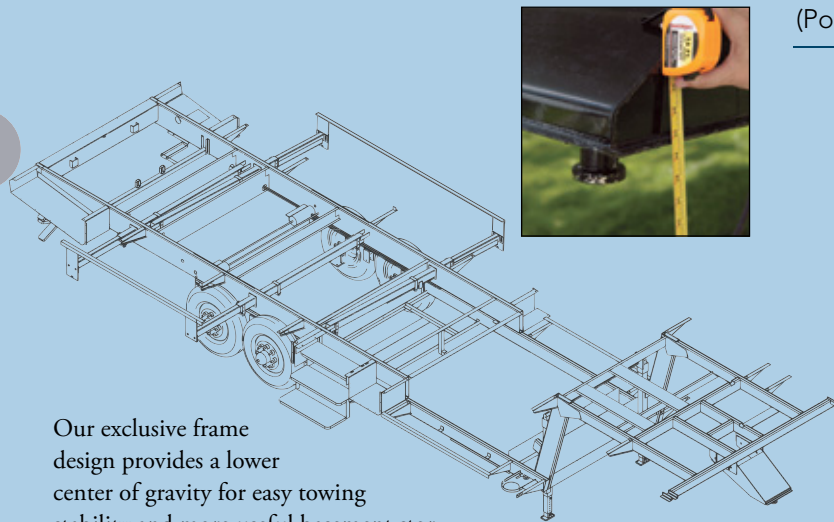
Top-rated construction sets us apart.



- Wood frame construction is especially beneficial to full-timers because of its strength, durability, and comfort.
- Full 5/8" Structurewood™ floors are sturdy, quiet, and give your home a solid base.

- Heated basement area protects under-floor systems and stored items from weather extremes.
- Exclusive "Walk-Anywhere" one-piece fiberglass roof (Excel Limited Edition) is not only easy to maintain, but provides an exceptional barrier against the elements.

Construction Spotlight: "Drop Z" Frame Design



Our exclusive frame design provides a lower center of gravity for easy towing stability and more useful basement storage. We use a box tube frame for unbeatable strength and durability.

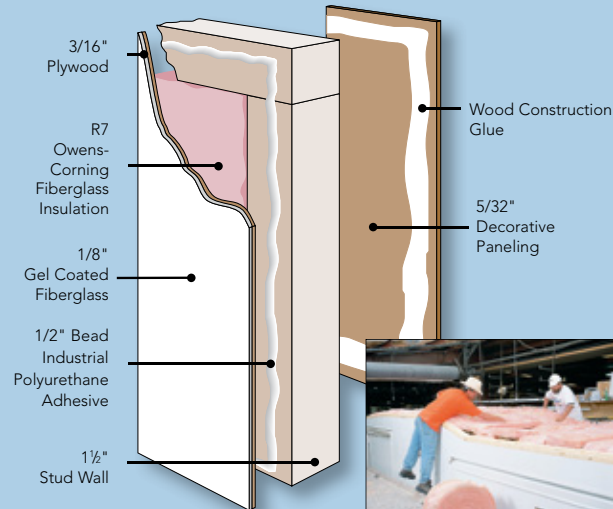


- Gel-coated fiberglass exterior (on Classic and Limited) gives your Excel a beautiful, easy-to-clean, durable outer skin that is virtually impervious to the elements.
- R7 sidewall insulation (doubled in the floor and roof) helps keep the coach cozy in winter and cool in summer, while also saving on heating and cooling costs.



- 2" x 4" tapered roof design provides outstanding run-off—shedding rain and snow more effectively and completely than flat roofs.

Construction Spotlight: PPLS (Positive Pressure Lamination System)



Did you know that the industry standard for fiberglass sidewall delamination is about 1%? Our unique lamination system ensures the strongest, most reliable sidewall available. No delamination or buckling! That means one out of every hundred coaches have a delamination problem. To date, we have manufactured over 7,500 sidewalls using our exclusive PPLS system without a single case of delamination.

Gold Medal Promises



Being in first place is nothing new for Excel. We're famous for making a top-quality product with exceptional craftsmanship and outstanding attention to detail. We back our excellent construction with two exclusive warranties:

2-Year Total Trust Warranty

We promise your Excel fifth wheel will be free from defects in materials or faulty workmanship for a full two years after its original purchase.



Zero Degree Guarantee

Excel guarantees that your holding tanks, water tank, interior water lines and other essential plumbing won't freeze — all the way down to zero degrees*!



*The Zero Degree Guarantee is in effect on all 2004 and later models with optional Thermopane windows installed. Furnace must be in operation for guarantee to be in effect.

Your Local Excel Dealer:

Construction Spotlight: Heavy Duty Slide-out Gear Box



Excel RVs feature a sealed, oil-packed gear box for the slide-outs — providing virtually indestructible, maintenance-free dependability that will give you years of reliable service.

Manufactured by Peterson Industries, Inc.
616 E. Hwy. 36
Smith Center, Kansas 66967

800-368-3759
www.excelrvs.com