

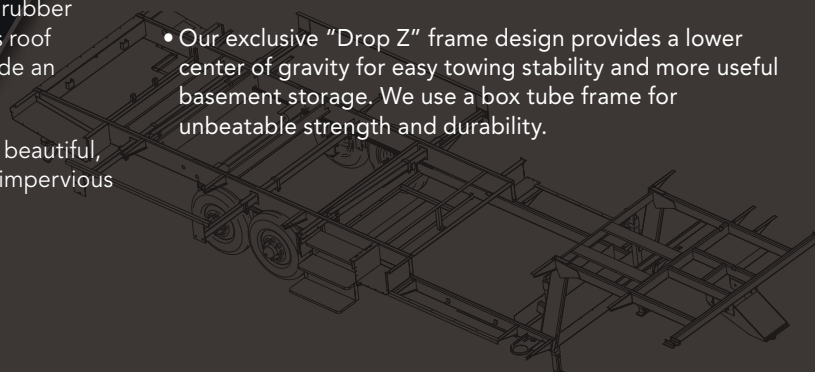


Excel

2012 FIFTH WHEELS & TRAVEL TRAILERS

—OUTSTANDING CONSTRUCTION SETS US APART—

- Wood frame construction is especially beneficial to full-timers because of its strength, durability, and comfort.
- Full 5/8" plywood floors are sturdy, quiet, and give your home a solid base.
- Heated basement area protects under-floor systems and stored items from weather extremes.
- Exclusive "Walk-Anywhere" one-piece seamless rubber roof (Winslow) and molded gel-coated fiberglass roof (Limited) are not only easy to maintain, but provide an exceptional barrier against the elements.
- Gel-coated fiberglass exterior gives your Excel a beautiful, easy-to-clean, durable outer skin that is virtually impervious to the elements.
- 2" x 4" tapered roof design provides outstanding run-off – shedding rain and snow more effectively and completely than flat roofs.
- R10 sidewall insulation and R17 floor and roof insulation help keep the coach cozy in winter and cool in summer, while also saving on heating and cooling costs.
- Standard pin height is 43½".
- Our exclusive "Drop Z" frame design provides a lower center of gravity for easy towing stability and more useful basement storage. We use a box tube frame for unbeatable strength and durability.



—UNBEATABLE WARRANTIES—



With Excel's Minus Ten Degree Guarantee, you can be sure your holding tanks, water tank, interior water lines and other essential plumbing won't freeze – all the way down to minus ten degrees!*

* See your dealer for complete explanation of product warranties. The Minus Ten Degree Guarantee is in effect on all 2008 and later models with Thermopane windows installed. Furnace must be in operation for guarantee to be in effect.



Excel's 2-Year Limited Warranty covers material and workmanship of the steel frame, wood structure, laminated sidewalls, roof, and other parts/assemblies manufactured by Peterson Industries, Inc. for two full years after your original date of purchase. It's our promise that your Excel is built to last. Equipment and appliances are covered by manufacture warranties.

Peterson Industries is proud to use these suppliers who share our commitment to quality and service:

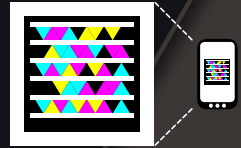


Herbergers generously provided many of the decorator items featured in the photos of this brochure.



Available in 28', 31', and 34' models, Winslow sets the adventurous traveler up in style and affordable luxury. The bold profile and optional paint and graphics package make a statement. An interior wrapped in rich, hickory woodwork and comfortable amenities invite you to stretch out and unwind after a day spent exploring.

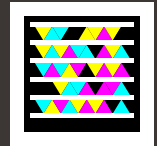
The new Winslow Travel Trailer makes innovative use of Excel's groundbreaking "Drop-Z" I-Beam frame, providing more than 100 cubic feet of basement storage — space unheard of in the travel trailer industry!



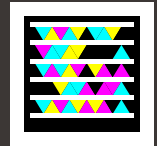
Get the free mobile app at <http://gettag.mobi>



If your idea of travel involves 5-star accommodations and a long list of available perks, the Limited is for you. Standard features include many extras that are either optional or unavailable on other models, like a 42" HD LCD television, LED taillights, an industry-first pillowtop mattress with box springs, and so much more.



Bring your 4-wheeler, golf cart, motorcycle or snowmobile along, and you'll be set for fun wherever you go. The Wild Cargo's spacious garage area accommodates all this and more. Seating that folds into a double bed, and a drop-down overhead bunk offer plenty of room for guests. The beautiful interior surrounds you with all the creature comforts of home.





—A WHOLE NEW EXPERIENCE—



WINSLOW



Affordable luxury is par for the course in our Winslow line, with standard features like a 42" LCD-HD TV, hickory woodwork, and a host of attractive options and unique features throughout every floorplan.

Available in 28', 31', and 34' models, the Winslow features a bold exterior profile and graphics package that announces your arrival wherever you go. The fully enclosed and heated holding tank areas make the Winslow the best four-season units at any price. And our 35,000 BTU furnace, and 15,000 BTU air conditioner units are the biggest in

the business. Plus every Winslow is covered by our exclusive Minus Ten Degree Guarantee, providing peace of mind that your tanks, water lines, and other essential plumbing fixtures won't freeze when the temperature drops.*

Excel is among the few fifth wheel manufacturers in the country to build a frame strong enough to support an optional Class 3 receiver hitch capable of pulling a 4,000 lb. boat. And abundant storage throughout the unit means you'll never have to sacrifice the things that make your travel plans extra enjoyable.



Shown with optional partial body paint.

*See your dealer for complete explanation of product warranties. The Minus Ten Degree Guarantee applies to all 2008 and later models with Thermopane windows installed. Furnace must be in operation for guarantee to be in effect.

—A WHOLE NEW EXPERIENCE—



WINSLOW

The 2012 Winslow is designed for your total comfort and convenience.

Amenities can be tailored for the way you like to live and travel. The standard 8 cubic foot, 2-door refrigerator can be upgraded to a 10 cubic foot model. Add a convection microwave oven to speed up cooking plans, or a central vacuum system to make cleaning a breeze.

An optional whole house water filter makes everything taste better. And many Winslow floorplans offer an optional stacked washer and dryer unit.

The true, queen size pillowtop mattress fits standard sheets, and an optional box spring makes sleeping in your Winslow as comfortable as home.

From design to delivery, your family's comfort is our inspiration.



Maximized storage is part of every floorplan, including this under-seat compartment on all the dining chairs.



The handy exterior utility center allows easy access to the water system and filter, vacuum bag, batteries and more.





WINSLOW TT

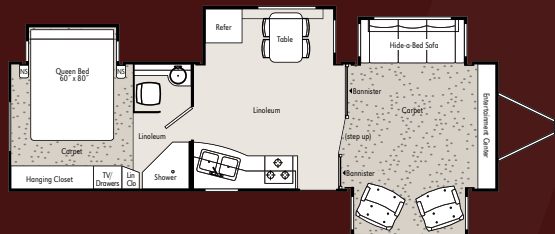
Peterson Industries is proud to offer the Winslow Travel Trailer for the customer who prefers one-level living, and wants to maintain use of the truck bed.

Full-timers and serious RVers will find the storage solutions in the Winslow TT especially attractive. Storage problems associated with other travel trailers have been solved completely in the Winslow TT. In fact, it's the only travel trailer in the industry to offer 120 cubic feet of basement

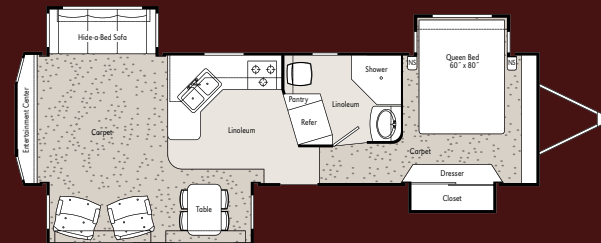
storage in the front third of the coach. We achieve this by utilizing our exclusive "Drop Z" 8-inch I-Beam frame.

Available in 31' and 33' models, Winslow TT floorplans are packed with the same cutting-edge design and spectacular features found in our 5th wheels. Optional electric front and rear stabilizer jacks make set up a breeze, and a convenient storage unit in the front accommodates dual 30-pound LP bottles.

DT31FLW



DT33RLE





We ensure that every square inch of our coaches are designed to maximize storage. You'll find large pantries, deep drawers and innovative spaces that keep you organized.



Our cabinet drawers feature full extension, ball bearing drawer glides and real wood sides, not sawdust board.



A residential style dresser offers plenty of easy-to-access storage at the foot of the bed.



WINSLOW

With eight available floorplans in the Winslow line, you'll find a model that fits you perfectly. Three slide outs expand living space and provide a variety of spacious design possibilities.

Kitchens are offered in either wide-open or u-shaped designs. Hide-a-bed sofas are standard in all floorplans, including those with wraparound sofas. Some plans place the refrigerator against an interior wall for maximum living space. Each plan offers a washer/dryer as an attractive option. And every inch has been utilized, with storage under the bed, in the overhead cabinets, behind the grandfather clock, and more!



The deep closet includes shelving behind the hang rod for additional storage space.



A one-piece, solid surface countertop, oil rubbed bronze fixture and undermount sink combines beauty and easy-clean convenience.



Halogen lighting adds a modern look, and lends a warm, inviting feel throughout the unit. Enjoy surround sound from the flush mount speakers.



Watch a movie on your optional 26" LCD-HD TV in the bedroom before turning in for the night.



The optional wheeled island offers additional counter and storage space, and moves easily to suit your needs.



—THE HIGHEST LEVEL OF LUXURY—



LIMITED

Brimming with cutting-edge standard amenities and attractive options, Excel's luxurious Limited line represents the epitome of American ingenuity. Our 2012 models include fresh, clean lines for today's more contemporary traveler.

Subway tile behind the stove and around the optional fireplace lend a modern feel, and a clever pullout cutting board and optional wheeled island stretch

your cooking and entertaining needs. A pullout spice rack above the stove in the kitchen is an attractive and convenient feature, and every floorplan is designed to maximize counter space.

The Limited provides the complete comfort and luxurious feel of a 5-star hotel, making it the optimal choice for the full-time and avid RVer. Its lasting quality means your Limited will serve you faithfully for many years to come.



Optional body paint in Black Almond.

—THE HIGHEST LEVEL OF LUXURY—



LIMITED



The pull-out spray faucet offers both convenience and style.

Every inch of the 2012 Limited is a sight to behold, with floorplans and décor choices that beckon to the traveling spirit.

An available wraparound sofa invites you to stretch out and enjoy a movie on the 42" LCD TV, or chat with friends in the comfortable living room. An optional fireplace accented with subway tile surround lends an added touch of luxury. Halogen lighting is standard, casting a warm, inviting feel throughout. Residential-quality carpeting and flooring enhances the homelike feel.

The optional full body exterior paint package makes a striking impression in the park, campground, and on the road. When you choose a Limited, you receive top-of-the-line quality and innovation.



The 42" LCD wall mounted television extends and tilts to provide a great view from every seat with this optional swing arm mount.



Optional body paint in Black Gold.





Fifteen available floorplans and a wide variety of decorator packages suit every taste, from open and contemporary, to cozy and traditional.



The spacious and welcoming kitchen features ample storage options such as a pullout pantry, appliance garage, and wine rack. If you're a Food Network junkie, the 19" LCD-HD television features optional satellite programming from DISH Network or DIRECT TV.



A convenient and functional office nook comes pre-wired for your computer and features overhead storage to keep things organized.



Excel is the only manufacturer in the industry to offer a pillowtop mattress and box spring.



Sofas are available in a variety of different fabric combinations and feature a standard hide-a-bed with incline setting.



Our optional EZ-up coffee table can be extended and used as a writing desk or an additional place setting.



Subway tile behind the stove lends an added touch of class to the kitchen.



LIMITED

Amenities that are options in other lines are standard in the Limited, like premium quality carpeting, a light-blocker vent cover in the bedroom, and a whole-house water filtration system. Add an optional fireplace for added warmth and hospitality. And optional remote control window blinds allow you to add light or privacy with a single touch.

The one-piece fiberglass shower is roomy and easy-to-clean. A matching vanity, choice of vessel or drop-in sinks, and standard china toilet complete the beautiful bathroom.



The optional quad door refrigerator features 12 cubic feet of space.



Tile and wood laminate flooring options are easy to maintain, feel great underfoot, and are beautiful to behold.



A full-length glass paneled bedroom door is an attractive option, with an accordion blind and valance for a designer touch.



The digital SeeLevel monitor lets you check water levels quickly and easily.

-ACTION ON THE GO-



WILD CARGO

If your ideal vacation includes a motorcycle, golf cart, 4-wheeler or other off-road toys, without sacrificing the comforts of home, the Wild Cargo is perfect for you.

The Wild Cargo includes the same features as our Winslow line, like solid surface countertops and quality-constructed furniture, which distinguishes it from other toy haulers that are built for function alone. The 10½' garage accommodates two motorcycles or even a Smart Car, since the ramp door is rated for 2,000 pounds. The garage can also be used as an office, patio, second bedroom, hobby or exercise room, making the Wild Cargo perfect for extended stays or full-time use.

Guests will find plenty of room to call their own in the Wild Cargo. Move the table in the garage area, and the optional sit-and-sleep benches fold into a bed. The top bunk moves down when you need it, and up when you don't. Cabinet space above the garage door in the living area is also great for storing gear.

Four available floorplans include commercial grade rubberized flooring, and options like a built-in generator and 30-gallon fuel cell for worry-free camping in remote areas. And every Wild Cargo is covered by our exclusive Minus Ten Degree Guarantee, providing peace of mind that your tanks, water lines, and other essential plumbing fixtures won't freeze when the temperature drops.* An optional full-body paint package matches your adventurous spirit.

*See your dealer for complete explanation of product warranties. The Minus Ten Degree Guarantee applies to all 2008 and later models with Thermopane windows installed. Furnace must be in operation for guarantee to be in effect.



An easy-open aluminum framed ramp door is rated for 2000 pounds.



An optional pull-down patio screen keeps the bugs out.



The bathroom includes a solid surface top with under-mount lavatory sink.

WILD FLOORPLA

W39SKM





The only thing as beautiful as nature itself is our Wild Cargo with optional full body paint. The paint scheme shown is Silver Mountain.

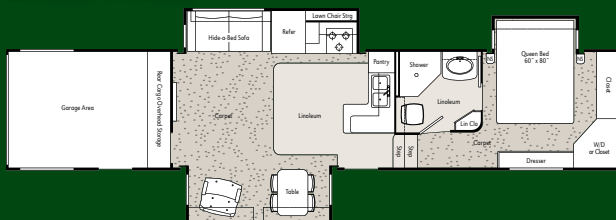


The sit-and-sleep benches fold down into a bed, and the bunk moves up and out of the way when not in use.

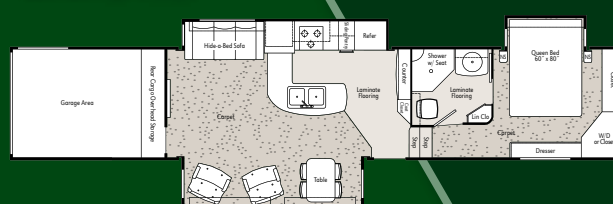
CARGO

NS

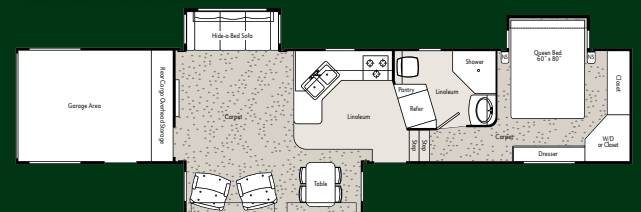
W39TKE



W41GKE



W41RLE



WINSLOW

FLOORPLANS

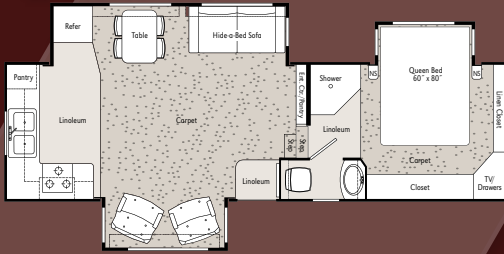
WINSLOW TT

Winslow TT floorplans can be found on page 7.

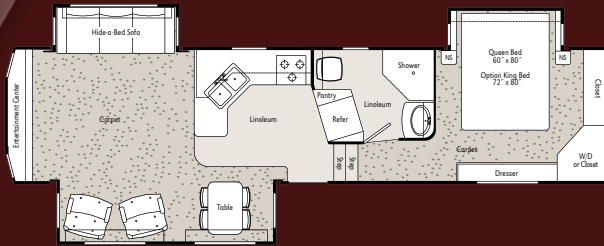
LIMITE

FLOORPLANS

D28RKW



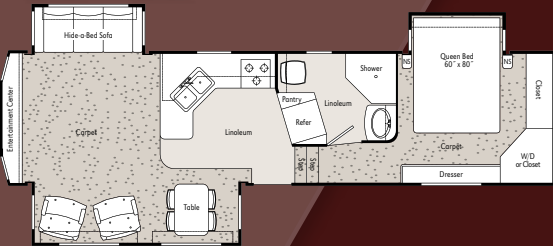
D34RLE



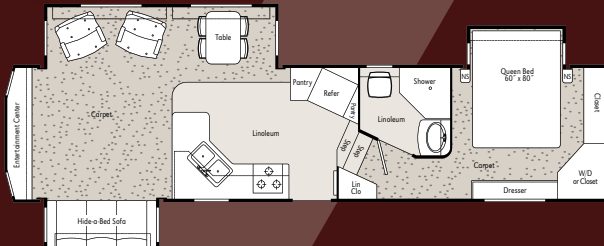
L31RLE



D31RLE



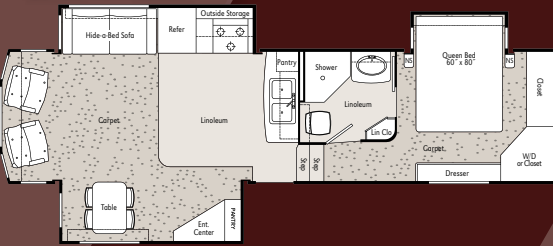
D34RLM



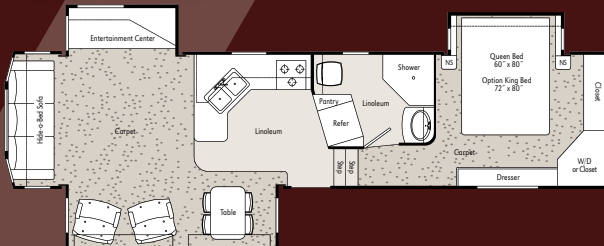
L31RSE



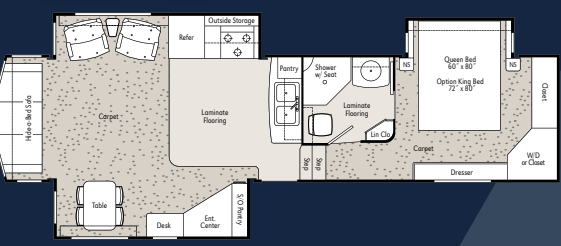
D31RSE



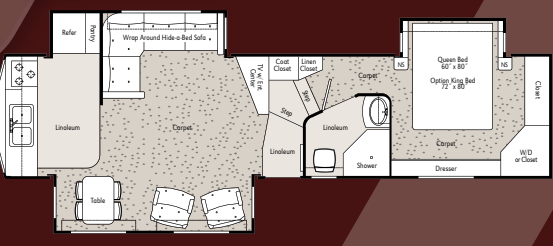
D34RLS



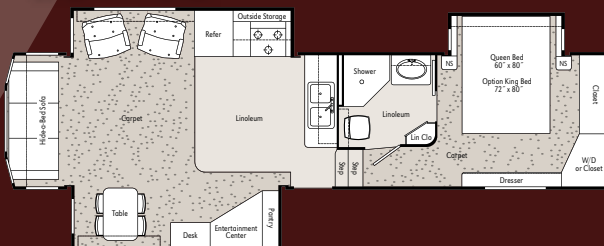
L33FKE



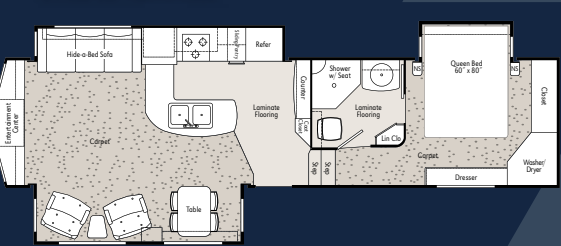
D34RKM



D34RSE

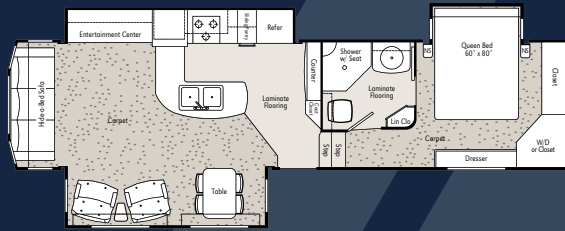


L33GKE





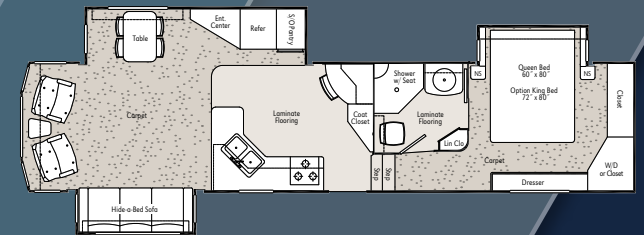
L33GKS



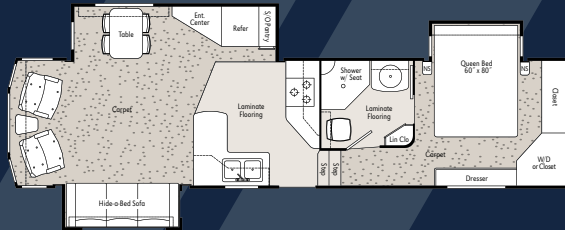
L36CFE



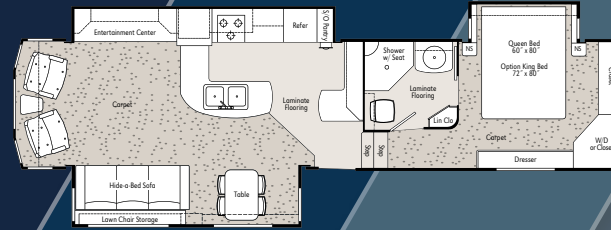
L36RSE



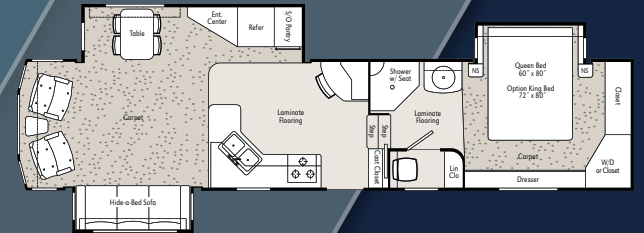
L33RSE



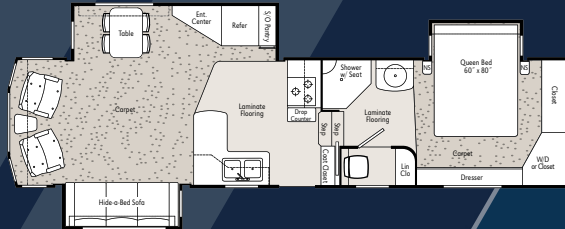
L36GKE



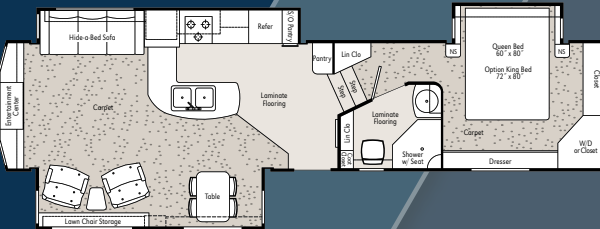
L36RSO



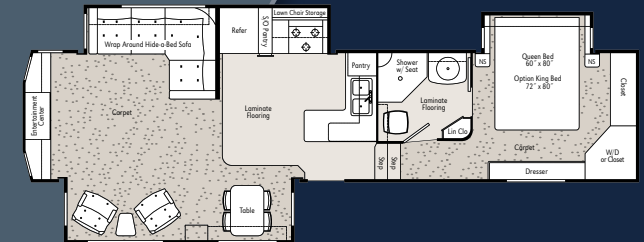
L33RSO



L36GKM



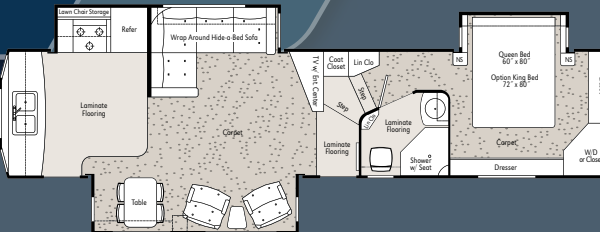
L36TKE



L33TKE



L36RKM



WILD CARGO

Wild Cargo floorplans can be found on pages 16-17.

RV ENHANCING AMENITIES AND OPTIONS



The central vac with powerhead and VacPan makes cleaning a breeze!



Enhance your digital entertainment experience with an automatic satellite system for DISH Network or DIRECT TV.



Commercial grade rubberized flooring in the basement makes cleanup easy.



The keyless locking system offers effortless programming and a secure, convenient way to safeguard your RV.



We've added even more strength and stability with struts on heavy access doors (standard on Classic and Limited). Plus most models offer slide out basement storage.



Our independent hydraulic leveling system makes leveling your fifth wheel easier and smoother than ever.



With our motorhome style fully automatic leveling system, just push the "Automatic Level" button and watch it work!



The optional sophisticated "WeatherPro" awning on the Limited operates via a key fob remote control with a sensor that automatically retracts it when the wind kicks up. The A&E Power Awning (with remote control only) is available as an option on the Winslow.



We also offer disc brakes without the MorRyde suspension.



The Reel-EZ water hose makes extending and storing your hose a breeze.



Traditional-style sofa



Contemporary-style sofa

DECORATOR PACKAGES

A variety of wood finishes, upholstery, window fabrics, and floor coverings are available for every taste – from contemporary to traditional and everything between. Every choice is designed for comfort, durability, and easy care and maintenance.

See your dealer for actual fabric samples and decorator package options.



Camper jacket adds style and protection, yet still allows you to access the basement door.



Pivot-EZ sewer hose compartment ensures you'll never have to disconnect your hose from the RV.



The Glide Ride Pin Box absorbs bumps and jolts through a gravity, self-centering parallel linkage system.



The boat hitch doubles as a receiver hitch for a bicycle rack.



Electric stabilizer jacks make setting up your Winslow a breeze and saves your back and shoulders.



Our multi-function utility center provides easy access to shut off individual faucets, change water filters, replace vacuum bags, disconnect the battery and more.



Haul your motorcycle anywhere with our frame-mounted Hydralift™. Available on models 34' and shorter.



Our uni-body hydraulic valve system for slide rooms and jacks include individual functionality and a manual override.



Some floorplans allow space for an optional icemaker.



Gel-coated access doors are a full 1-3/8" thick, offering longer life, better insulation and a tight seal for protection from moisture and insects.

FLOORING



Torino vinyl flooring by Beauflor® is standard with hickory cabinets in the Winslow and Wild Cargo.



Wood laminate flooring is standard with hickory cabinets in the Limited.



Ivory porcelain laminate tile is standard with Brazilian cherry-stained maple cabinets in the Limited.

CABINETS

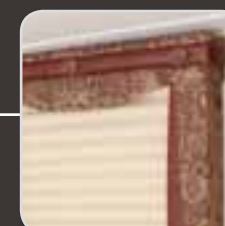


Hickory stained maple cabinets are standard in all models.



Brazilian cherry-stained maple cabinets are optional in all models.

VALANCES



Window valances with duplex shades can be customized to showcase a fabric or leather-look. You will need to specify your preference when ordering.



WILD CARGO

MODEL:	W39SKM	W39TKE	W41RLE	W41GKE
Base Unit Wt. (W/O Opt.)	14,740	14,740	15,300	16,500
Unloaded Vehicle Wt. (W/O Water)	15,040	15,040	15,600	16,800
Hitch Weight (W/O Water)	2,860	2,860	2,950	2,553
Weight on Axles	12,180	12,180	12,650	14,247
Combined Axle Weight Rating	18,000	18,000	18,000	18,000
Payload Capacity	5,960	5,960	5,400	4,200
Maximum GVWR	21,000	21,000	21,000	21,000
Height (Incl Vents & A/C)	153"	153"	153"	153"
Overall Length (Pin to Bumper)	40' 5"	40' 5"	42' 1"	42' 11"
Square Feet	399.8	399.8	416.0	424.0
Fresh Water Capacity (Incl WH)	90	90	90	90
Gray Water Capacity	67	67	67	67
Black Water Capacity	48	48	48	48
In-Line Central Air	15M	15M	15M	15M
Furnace BTU	40M	40M	40M	40M
Bedroom Interior Height	6' 4"	6' 4"	6' 4"	6' 4"
2 Pc. Stacking Washer/Dryer	OPT	OPT	OPT	OPT
Electric Fireplace	N/A	OPT	OPT	OPT
Awning Size	17'	17'	16'	17'
Garage Length	10' 6"	10' 6"	10' 6"	10' 6"
Living Area Int. Height	8' 3 1/2"	8' 3 1/2"	8' 3 1/2"	8' 3 1/2"

WINSLOW

28RKW	31RLE	31RSE	34RSE	34RLE	34RLS	34RKM	34RLM
11,600	12,280	11,540	13,160	13,160	13,160	13,390	13,100
11,900	12,580	11,840	13,460	13,460	13,460	13,690	13,400
2,500	2,570	2,020	2,380	2,380	2,420	2,380	2,350
9,400	10,010	9,820	11,080	11,080	11,040	11,310	11,050
12,000	14,000	14,000	14,000	14,000	14,000	14,000	14,000
3,100	4,920	5,660	4,040	4,040	4,040	3,810	4,100
15,000	17,500	17,500	17,500	17,500	17,500	17,500	17,500
150"	150"	150"	150"	150"	150"	150"	150"
29' 5"	32' 11"	32' 11"	35' 5"	35' 5"	35' 5"	35' 5"	35' 5"
309.5	341.0	341.0	356.5	356.5	356.5	356.5	354.6
71	90	90	90	90	90	90	90
55	67	67	67	67	67	67	67
40	48	48	48	48	48	48	48
15M	15M	15M	15M	15M	15M	15M	15M
35M	35M	35M	35M	35M	35M	35M	35M
6' 4"	6' 4"	6' 4"	6' 4"	6' 4"	6' 4"	6' 4"	6' 4"
N/A	OPT	OPT	OPT	OPT	OPT	OPT	OPT
N/A	OPT	OPT	OPT	OPT	OPT	OPT	OPT
14'	16'	15'	16'	17'	17'	16'	17'

WINSLOW TT

DT31FLW	DT33RLE
10,200	10,990
10,500	11,290
900	940
9,600	10,350
12,000	12,000
2,500	2,210
13,000	13,500
143"	143"
32' 11"	34' 3"
303.0	331.0
64	64
67	67
48	48
15M	15M
35M	35M
6' 10"	6' 10"
N/A	N/A
OPT	OPT
17'	14.5'

LIMITED

MODEL:	31RLE	31RSE	33FKE	33GKE	33GKS	33RSE	33RSO	33TKE	36RSE	36RSO	36CFE	36GKE	36GKM	36RKM	36TKE
Base Unit Wt. (W/O Opt.)	12,740	12,740	13,500	13,680	13,500	13,100	12,650	13,500	14,100	14,100	14,680	14,100	14,100	14,100	14,150
Unloaded Vehicle Wt. (W/O Water)	13,040	13,040	13,800	13,980	13,800	13,400	12,950	13,800	14,400	14,400	14,980	14,400	14,400	14,400	14,450
Hitch Weight (W/O Water)	2,740	2,740	2,720	2,760	2,720	2,640	2,640	2,720	2,790	2,790	2,920	2,790	2,790	2,790	2,950
Weight on Axles	10,300	10,300	10,960	11,220	10,960	10,760	10,310	10,960	11,610	11,610	12,060	11,610	11,610	11,610	11,500
Combined Axle Weight Rating	14,000	14,000	14,000	14,000	14,000	14,000	14,000	14,000	15,000	15,000	15,000	15,000	15,000	15,000	15,000
Payload Capacity	4,460	4,460	3,700	3,520	3,700	4,100	4,550	3,700	4,350	4,350	3,770	4,350	4,350	4,350	4,300
Maximum GVWR	17,500	17,500	17,500	17,500	17,500	17,500	17,500	17,500	18,750	18,750	18,750	18,750	18,750	18,750	18,750
Height (Incl Vents & A/C)	150"	150"	150"	150"	150"	150"	150"	150"	150"	150"	150"	150"	150"	150"	150"
Overall Length (Pin to Bumper)	32' 11"	32' 11"	34' 4"	34' 4"	34' 4"	34' 4"	34' 4"	34' 4"	37' 2"	37' 2"	37' 2"	37' 2"	37' 2"	37' 2"	37' 2"
Square Feet	341.0	341.0	364.4	367.0	364.4	347.7	347.7	364.4	390.1	390.1	376.6	390.1	390.1	390.1	396.0
Fresh Water Capacity (Incl WH)	90	90	90	90	90	90	90	90	90	90	90	90	90	90	90
Gray Water Capacity	67	67	67	67	67	67	67	67	67	67	67	67	67	67	67
Black Water Capacity	48	48	48	48	48	48	48	48	48	48	48	48	48	48	48
In-Line Central Air	15M	15M	15M	15M	15M	15M	15M	15M	15M	15M	15M	15M	15M	15M	15M
Furnace BTU	40M	40M	40M	40M	40M	40M	40M	40M	40M	40M	40M	40M	40M	40M	40M
Bedroom Int. Height	6' 4"	6' 4"	6' 4"	6' 4"	6' 4"	6' 4"	6' 4"	6' 4"	6' 4"	6' 4"	6' 4"	6' 4"	6' 4"	6' 4"	6' 4"
2 Pc. Stacking Washer/Dryer	OPT	OPT	OPT	OPT	OPT	OPT	OPT	OPT	OPT	OPT	OPT	OPT	OPT	OPT	OPT
Electric Fireplace	OPT	OPT	OPT	OPT	OPT	OPT	OPT	OPT	OPT	OPT	OPT	OPT	OPT	OPT	OPT
Awning Size	16'	15'	16'	17'	16'	19'	19'	17'	17'	17'	17'	17'	17'	17'	17'

2012 OPTIONS AND STANDARD FEATURES

Each Excel model is geared to meet the expectations, needs and budgets of different RV buyers. It's not a matter of one line being "better" than another, but more a question of which line best meets your lifestyle. The chart below compares the standard and optional features of our three lines. Rest assured, however, that whether you pull a Winslow, Limited or Wild Cargo, your fifth wheel comes with one standard feature no other manufacturer can offer — the legendary value of Excel!

W=Winslow L=Limited WC=Wild Cargo

Construction and Exterior Features	W	L	WC
Partial Body Paint	Opt	-	-
Full Body Paint	-	Opt	Opt
Fully Enclosed and Heated Underbelly	Std	Std	Std
Exclusive -10 Degree Freeze Guarantee	Std	Std	Std
Utility Center w/Water Manifold	Std	Std	Std
2 - 8" Exterior Scene Lights	Std	Std	Std
Manual Awning	Std	-	-
Two-Step Awning	-	Std	Std
Power Awning (w/o Wind Sensor)	Opt	-	-
Electric "Weatherpro" Awning W/Wind Sensor	-	Opt	Opt
16" Aluminum Wheels & Goodyear Tires	Std	Std	Std
Dual 30# Bottles	Std	Std	Std
Dual 40# Bottles	Opt	Opt	Opt
Gel-Coated Fiberglass Exterior, Front & Rear Cap	Std	Std	Std
Fiberglass Front Cap Designed for Increased Turning Radius	Std	Std	Std
Gas Struts on Access Doors	Std	Std	Std
1-3/8" Thick Radius Gel-Coated Access Doors	Std	Std	Std
"Drop Z" Box Tube Frame Construction (No I-Beam)	Std	Std	Std
Frameless Tinted Thermo-Pane Windows	Std	Std	Std
Walk Anywhere One-Piece Seamless EPDM Roof	Std	-	Std
Walk Anywhere Molded Gel-Coated Fiberglass Roof	-	Std	-
LED Tail Lights	-	Std	Std
35M BTU Furnace With In-Floor Ducting	Std	-	-
40M 2-Stage Furnace	Opt	Std	Std
Camper Jacket	-	Opt	-
Lawn Chair Storage (Most Models)	Opt	Std	-
Steel Generator Box ONLY	Opt	Std	Std
Class III Receiver Hitch (N/A in Canada)	Opt	Opt	-
NevRLube Axles and Shock Absorbers	Std	Std	Std
Disc Brakes - 17.5" "J" Tires	Opt	Opt	Opt
Mor-Ryde Susp. w/Disc Brakes - 17.5" "J" Tires	-	Opt	Opt
Glide Ride Pin Box	Opt	Opt	Opt
Hydralift Motorcycle Carrier (34' & Below)	Opt	Opt	-

Interior Construction Details	W	L	WC
Oil Rubbed Bronze Hardware	Std	Std	Std
Linoleum in Bathroom, Kitchen & Entry	Std	-	Std
Residential Style Carpet With 8 lb. Rebond Pad	Std	Std	Std
Premium Carpet	Opt	Std	Std
Residential Laminate Flooring in Bath, Kitchen & Entry	-	Std	-
Hickory Interior	Std	Std	Std
Brazilian Cherry Maple Interior With Crown Molding	Opt	Opt	Opt
Ball Bearing Drawer Glides w/Wood Sides (No Sawdust Board)	Std	Std	Std
Solid Wood Face Frames, Screwed Together Not Stapled	Std	Std	Std
Cedar Lined Bedroom Closet	-	Std	-
Contour Lambrican Window Valances w/Duplex Shades	Std	Std	Std
MCD Ultimate Remote Shades	-	Opt	-
Recessed Halogen Ceiling Lighting	Std	Std	Std
French Door With Night Shade in Hall	Opt	Opt	Opt
6' 4" Ceilings in Level Bed and Bath Deck Area	Std	Std	Std
Padded Ceiling	Opt	Std	Opt
Solid-surface countertops w/undermount sink	Std	Std	Std
Solid-surface Backsplash in Kitchen	-	Std	-
Vessel Bowl Lavatory Sink	-	Std	-

Appliances and Accessories	W	L	WC
Microwave	Std	-	-
Convection Microwave Oven	Opt	Std	Std
Recessed 3-Burner Range with Sealed Burner & Piezo Ign	Std	Std	Std
8 Cu Ft 2-Door Refrigerator	Std	-	Std
10 Cu Ft 2-Door Refrigerator	Opt	Std	Opt
12 Cu Ft 4-Door Refrigerator (N/A in All Models)	-	Opt	-
Cable TV Prewire & TV Antenna With Booster	Std	Std	Std
Pre-Wire Ground Based AND Roof Mount Sat	Std	Std	Std
Winegard "Trav'ler" Sat System for Dish or Direct TV	Opt	Opt	Opt
19" or 26" LCD TV in Bedroom (Depending on Model)	Opt	Opt	Opt
42" LCD TV in Livingroom (Most Models)	Std	Std	Std
Swing Arm Mount for LCD TV	Opt	Opt	Opt
Monitor Panel	Std	-	Std
SeeLevel Electronic Tank Monitoring System	-	Std	-
Central Vacuum System w/Powerhead and VacPan	Opt	Opt	Opt
Electric Fireplace (N/A in All Models)	Opt	Opt	Opt
Washer/Dryer Ready	Std	Std	Std
2-Piece Front Load Washer/Compact Dryer	Opt	Opt	Opt
Motorized SENSAR TV Antenna	Opt	Opt	Opt

Living/Dining Furniture and Accessories	W	L	WC
Rocker/Glider Swivel Recliners	Std	Std	Std
Hide-a-Bed in Sofa	Std	Std	Std
Sofa Caddy (N/A in Wrap-Around Sofa)	Opt	Opt	Opt
Computer Station (Most Models)	Std	Std	Std
"E-Z" Up Coffee Table	Opt	Opt	Opt
End Table Between Recliners	Opt	Std	Opt
Solid Wood Dinette Table With Pedestal Base	Std	Std	Std
Dining Booth (Instead of Table and Chairs)	Opt	Opt	Opt

Bedroom/Bathroom Amenities	W	L	WC
Queen Innerspring Mattress With Comforter, Pillows, & Shams	Std	Std	Std
Pillow Top Mattress	Std	Std	Std
Box Springs Under Mattress	Opt	Std	Opt
King Size Bed (Some Models)	OPT-34RLE	Opt	Opt
Nightstand on each side of the bed	Std	Std	Std
Lightblocker Vent Cover in Bedroom	Opt	Std	Std
Lift-Up Bed for Additional Storage	Std	Std	Std
Large ABS Residential Size Shower With Glass Door	Std	-	Std
Large One-Piece Fiberglass Shower & Matching Vanity	Opt	Std	Opt
China Toilet	Std	Std	Std

Plumbing	W	L	WC
Actively Heated Holding Tanks, Water Tank, Valves, Water Lines	Std	Std	Std
16 Gallon Output Gas/Electric DSI Water Heater With Bypass	Std	Std	Std
Whole House Water Filtration System	Opt	Std	Std
ShurFlo High Volume Demand Water Pump	Std	Std	Std
Pivot-EZ Sewer Hose Comp. w/20' Hose	Opt	Opt	Opt
Reel-EZ Water Hose Comp. w/50' Hose (N/A with Full Body Paint)	Opt	Opt	Opt

Electrical and Misc.	W	L	WC
60 Amp Convertor (55A in 28')	Std	Std	Std
50 Amp Service (30A in 28')	Std	Std	Std
Flush Floor New Generation Hydraulic Slide-Out System	Std	Std	Std
New Generation Hydraulic Front Jacks	-	Std	Std
12V Electric Front Jacks	Std	-	-
H&H Electric Rear Stabilizer Jacks	Opt	-	Opt
Independent Hydraulic Leveling System	Opt	Opt	Opt
Motorhome Style Fully Automatic Leveling System	-	Opt	Opt
Keyless Entry	Opt	Opt	Opt
Generator Ready for Onan (Incl. Box, Energy Command Monitor)	Opt	Opt	Opt
5500W LP Onan Generator (Includes Generator Ready)	Opt	Opt	Opt
High Volume Fan with Rain Sensor	Std	Std	Std
15,000 BTU Roof Air Conditioner With "Chill Grille"	Std	-	Std
15,000 BTU Roof Air Conditioner w/Concealed Return Air	-	Std	-
Wired for 2nd Air Conditioner in Bedroom (33' and Above)	Std	Std	Std
Ducted 2nd Air Conditioner (13.5M BTU Low Profile)	Opt	Opt	Opt
Heat Pump Instead of Air Conditioner	Opt	Opt	Opt
Wi Fi Back-Up Camera	Opt	Opt	Opt





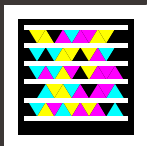
Manufactured by Peterson Industries, Inc.
616 E. Hwy. 36, Smith Center, Kansas 66967
800-368-3759 • www.excelrvs.com

VISIT US ONLINE!

EXCELRVS.COM

Visit our award winning website for in-depth information on our entire line of Excel RVs, including exterior views and floorplans with complete specs. You'll find model and feature photos, and so much more!

- Online newsletter and club updates
- Videos of models and features
- Model comparison feature
- Maintenance tips
- Pricing calculator
- Dealer locator
- Testimonials



Get the free mobile app at
<http://gettag.mobi>

